

Antibody Datasheet

Name: Mouse IgM Anti-Flavivirus Envelope Protein Antibody (4G2)

Product Code: AbFLAVENV-4G2-200

Batch #:

Date of Manufacture:

Product Description: Mouse monoclonal antibody specific for flavivirus envelope protein (clone 4G2). Recognises flavivirus group specific antigens (Dengue virus, West Nile Virus, Japanese Encephalitis, Yellow Fever Virus, Zika virus etc).

Clone Number: 4G2

Isotype: Mouse IgG2a

Amount: 0.2 mg

Concentration: 1.0 mg/ml

Presentation: Liquid

Buffer: PBS pH7.4

Preservative: 0.02% Proclin 300.

Immunogen: Dengue Virus Type 2 antigen

Purification: Antibody was purified from hybridoma cell culture supernatant by affinity chromatography on Protein A.

Specificity: Recognises flavivirus group specific antigens (Dengue virus, West Nile Virus, Japanese Encephalitis, Zika virus etc). It binds to the fusion loop at the extremity of domain II of protein E.

Applications: ELISA, Neutralisation, Western Blot (non-reducing conditions), Flow cytometry

Usage Guidelines

Short Term Storage: +4°C

Long Term Storage: -20°C

Storage Guidelines: The antibody is shipped at ambient temperature. Avoid repeated freeze/thaw cycles.



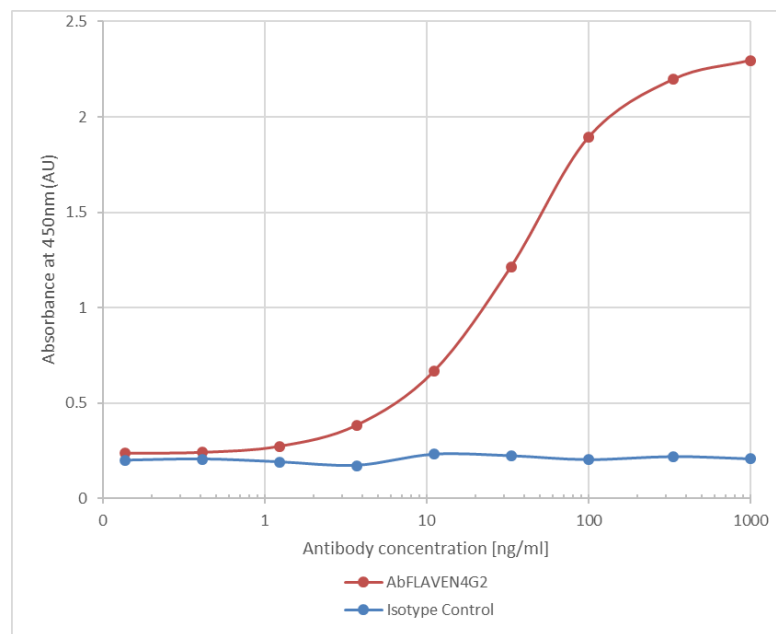
Antibody Datasheet

Name: Mouse IgM Anti-Flavivirus Envelope Protein Antibody (4G2)

Product Code: AbFLAVENV-4G2-200

Batch #:

Direct ELISA data: Dengue Virus Serotype 2 VLP (DENV2-VLP-100 from Native Antigen) coated onto a plate at 5µg/ml. Anti-flavivirus antibody (AbFLAVENV-4G2) was added to plate in a 3-fold serial dilution starting at 1000 ng/ml. Detection performed using HRP labelled goat anti-mouse IgG (AbD Serotec, 0300-0108P).



X

QC

X

QA

Products are for Research Use or for Further Manufacturing Use only. Not for Diagnostic or Therapeutic Use.

