

Antibody Datasheet

Name: Rabbit Anti-Borrelia burgdorferi sensu stricto (B31) OspA Antibody

Product Code: PAB21454-25

Batch #:

Date of Manufacture:

Product Description: Rabbit polyclonal antibody specific for Borrelia burgdorferi OspA

Isotype: IgG

Amount: 0.025 ml

Concentration: mg/ml

Purity: >95%

Presentation: Liquid (sterile filtered)

Buffer: 0.02 M Potassium Phosphate, 0.15 M Sodium Chloride, pH 7.2

Preservative: 0.01% (w/v) Sodium Azide

Immunogen: Recombinant MBP tagged B. burgdorferi OspA protein

Purification: Protein-A purified and cross-adsorbed against MBP from monospecific antiserum by chromatography

Specificity: This antibody is specific for Borrelia burgdorferi OspA protein. A BLAST analysis was used to suggest cross-reactivity with OspA from B. burgdorferi and sources based on 100% homology with the immunizing sequence.

Cross-Reactivity: Cross-reactivity with OspA or Osp from other sources has not been determined.

Applications: ELISA (1:5000), WB (1:1000)

Usage Guidelines

Storage: Store vial at -20°C or below prior to opening. To minimize loss of volume, dilute 1:10 by adding 225 µL of the buffer stated above directly to the vial. Recap, mix thoroughly and briefly centrifuge to collect the volume at the bottom of the vial. Use this intermediate dilution when calculating final dilutions as recommended above. Store the vial at -20°C or below after dilution. Avoid cycles of freezing and thawing.

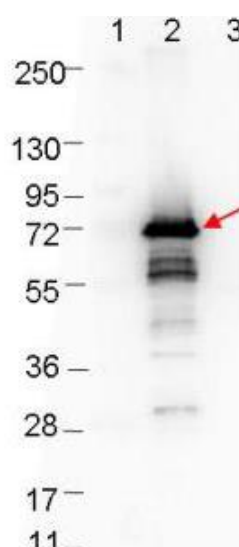


Western Blot: Western blot showing detection of 0.1 µg of recombinant OspA protein. Protein was run on a 4-20% gel, then transferred to 0.45 µm nitrocellulose. After blocking with 1% BSA-TTBS overnight at 4°C, primary antibody was used at 1:1000 at room temperature for 30 min. HRP-conjugated Goat-Anti-Rabbit secondary antibody was used at 1:40,000 in blocking buffer and imaged on the VersaDoc™ MP 4000 imaging system (Bio-Rad).

Lane 1: Molecular weight markers.

Lane 2: MBP-OspA fusion protein (arrow; expected MW: 70.5 kDa).

Lane 3: MBP alone.



X

QC

X

QA

Products are for Research Use or for Further Manufacturing Use only. Not for Diagnostic or Therapeutic Use.



www.thenativeantigencompany.com
VAT No: 102038475

NAC.Contact@LGCGroup.com
Registration No. 7386339

Page 2 of 2

The Native Antigen Company is now part of LGC Group.