

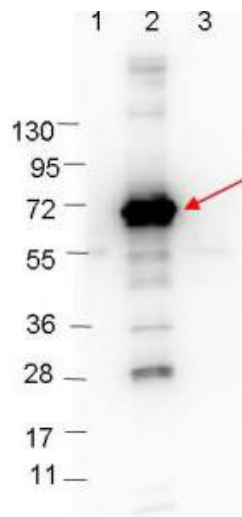
Antibody Datasheet

Product Name:	Rabbit anti <i>Borrelia burgdorferi</i> CRASP-1
Product:	Purified rabbit anti CRASP-1 antibody, unconjugated
Product Type:	Polyclonal
Isotype:	Rabbit IgG
Product code:	PAB21447-100
Batch Number:	R001218
Amount:	0.1 ml (1.0 mg/mL by UV absorbance at 280 nm)
Physical State:	Lyophilized
Buffer:	0.02 M Potassium Phosphate, 0.15 M Sodium Chloride, pH 7.2
Reconstitution Vol:	100 µL
Reconstitution Buffer:	Deionized water (or equivalent)
Preservative:	0.01% (w/v) Sodium Azide
Immunogen:	Recombinant MBP tagged <i>B. burgdorferi</i> CRASP-1 protein
Purification:	Protein-A purified and cross-adsorbed against MBP from monospecific antiserum by chromatography
Specificity:	This antibody is specific for <i>Borrelia burgdorferi</i> CRASP-1 protein. A BLAST analysis was used to suggest reactivity with CRASP-1 from <i>B. burgdorferi</i> and <i>B. garinii</i> sources based on 100% homology with the immunizing sequence. Partial cross-reactivity is expected against <i>B. spielmanii</i> , <i>afzelii</i> , and <i>valaisiana</i> sources based on 98% homology. Cross-reactivity with CRASP-1 from other sources has not been determined.

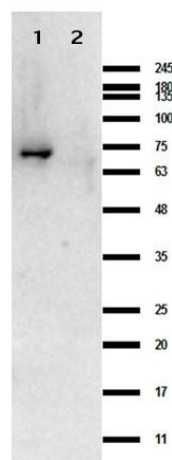


Applications: ELISA (1:5000), WB (1:1000)

Storage: Store at 4° C prior to restoration. For extended storage aliquot contents and freeze at -20° C or below. Avoid cycles of freezing and thawing. Centrifuge product if not completely clear after standing at room temperature. Antibody is stable for several weeks at 4° C as an undiluted liquid. Dilute only prior to immediate use.



Western blot showing detection of 0.1 µg of recombinant CRASP-1 protein. Lane 1: Molecular weight markers. Lane 2: MBP-CRASP-1 fusion protein (arrow; expected MW = 69.3 kDa). Lane 3: MBP alone. Protein was run on a 4-20% gel, then transferred to 0.45 µm nitrocellulose. After blocking with 1% BSA-TTBS overnight at 4°C, primary antibody was used at 1:1000 at room temperature for 30 min. HRP-conjugated Goat-Anti-Rabbit secondary antibody was used at 1:40,000 in blocking buffer and imaged on the VersaDoc™ MP 4000 imaging system (Bio-Rad).



Western Blot results of Rabbit Anti-CRASP-1 Antibody. Lane 1: CRASP-1 protein. Lane 2: MBP. Load: 0.05 µL. Primary Antibody: Rabbit Anti-CRASP-1 Antibody at 1.0mg/mL overnight at 4°C. Secondary Antibody: Goat anti-Rabbit at 1:70,000 for 30 min at room temperature. Blocking for 30min at room temperature. Expect: ~63.9kDa.

