

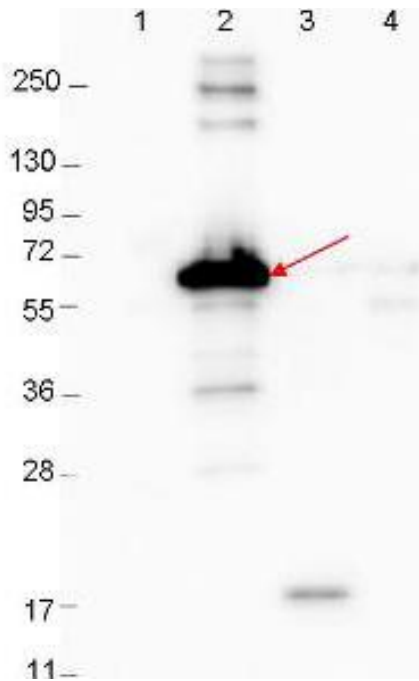
Antibody Datasheet

Product Name:	Rabbit anti <i>Borrelia burgdorferi</i> DbpA
Product:	Purified rabbit anti DbpA antibody, unconjugated
Product Type:	Polyclonal
Isotype:	Rabbit IgG
Product code:	PAB21449-25
Batch Number:	R001218
Amount:	25 µl (1.0 mg/mL by UV absorbance at 280 nm)
Physical State:	Liquid (sterile filtered)
Buffer:	0.02 M Potassium Phosphate, 0.15 M Sodium Chloride, pH 7.2
Preservative:	0.01% (w/v) Sodium Azide
Immunogen:	Recombinant MBP tagged <i>B. burgdorferi</i> DbpA protein
Purification:	Protein-A purified and cross-adsorbed against MBP from monospecific antiserum by chromatography
Specificity:	This antibody is specific for <i>Borrelia burgdorferi</i> DbpA protein. A BLAST analysis was used to suggest cross-reactivity with DbpA from <i>Borrelia burgdorferi</i> sources based on 100% homology with the immunizing sequence. Partial reactivity is expected against <i>Borrelia garinii</i> sources based on 60-80% homology. Cross-reactivity with DbpA from other sources has not been determined.
Applications:	ELISA (1:5000), WB (1:1000)



Storage:

Store vial at -20° C or below prior to opening. To minimize loss of volume, dilute 1:10 by adding 225 µL of the buffer stated above directly to the vial. Recap, mix thoroughly and briefly centrifuge to collect the volume at the bottom of the vial. Use this intermediate dilution when calculating final dilutions as recommended above. Store the vial at -20°C or below after dilution. Avoid cycles of freezing and thawing.



Western blot showing detection of 0.1 µg recombinant proteins in western blot. Lane 1: Molecular weight markers. Lane 2: MBP-DbpA fusion protein (arrow; expected MW: 60.9 kDa). Lane 3: DbpA, MBP removed by TEV cleavage. Lane 4: MBP alone. Protein was run on a 4-20% gel, then transferred to 0.45 µm nitrocellulose. After blocking with 1% BSA-TTBS (overnight at 4°C), primary antibody was used at 1:1000 at room temperature for 30 min. HRP-conjugated Goat-Anti-Rabbit secondary antibody was used at 1:40,000 in MB-070 blocking buffer and imaged on the VersaDoc™ MP 4000 imaging system (Bio-Rad).

