

Antibody Datasheet

Name: Human IgM Anti-Flavivirus Envelope Protein Antibody (4G2)

Product Code: MAB12269-50

Batch #:

Date of Manufacture:

Product Description: This humanised IgG1 anti flavivirus envelope protein monoclonal antibody has been prepared by chimerization from the mouse monoclonal antibody clone 4G2. The original variable domains of this antibody have been retained, whilst the constant regions have been replaced with human IgM. The antibody is then expressed in HEK293 cells. This antibody does not have a J-chain and therefore presents as a hexamer, rather than a pentamer.

Clone Number: 4G2

Isotype: IgM

Amount: 0.05 mg

Concentration: 1.0 mg/ml

Purity: >95%

Presentation: Liquid

Buffer: PBS pH7.4

Preservative: 0.02% Proclin 300

Immunogen: Dengue Virus Type 2 antigen

Purification: Antibody was purified from hybridoma cell culture supernatant by lectin affinity chromatography

Specificity: Recognises flavivirus group specific antigens (Dengue virus, West Nile Virus, Japanese Encephalitis, Yellow Fever virus, Zika virus etc). It binds to the fusion loop at the extremity of domain II of protein E.

Applications: ELISA, Neutralisation (NTRL), Western Blot (non-reducing conditions), Flow cytometry (FC), Immunofluorescence (IF), Immunohistochemistry - Paraffin Protocol (IHC-P)

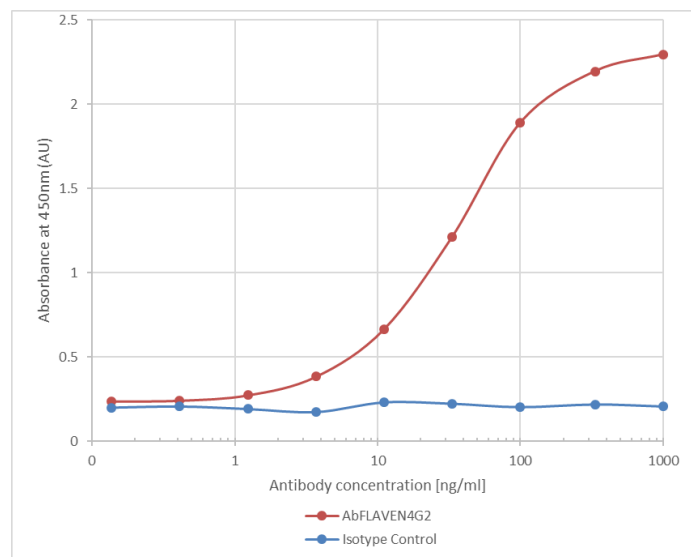
Usage Guidelines

Short Term Storage: +4°C

Long Term Storage: -20°C

Storage Guidelines: The antibody is shipped at ambient temperature. Avoid repeated freeze/thaw cycles.

Direct ELISA: Dengue Virus Serotype 2 VLP (DENV2-VLP-100 from Native Antigen) was coated onto a plate at 5µg/ml. Anti-flavivirus antibody (AbFLAVENV-4G2) was added to plate in a 3-fold serial dilution starting at 1000 ng/ml. Detection performed using HRP labelled goat anti-mouse IgG (AbD Serotec, 0300-0108P).



X

QC

X

QA

Products are for Research Use or for Further Manufacturing Use only. Not for Diagnostic or Therapeutic Use.

