

Certificate of Analysis

Name: Recombinant human immunoglobulin E (IgE)

Product code: REC31705-100 / REC31705-500

Batch #: 1906031529P

Description: Recombinant human IgE is composed of the human ϵ heavy chain and the K light chain. The antibody recognises Zika virus NS1. The heavy chain is C-terminally His-tagged. The antibody was purified by immobilised metal affinity chromatography.

Sequence Strain: human

Amount: 100 μ g / 500 μ g

Protein conc.: 0.79 mg/ml

Presentation and Buffer: Liquid, Dulbecco's phosphate buffered saline pH7.4, sterile filtered.

Usage guidelines:

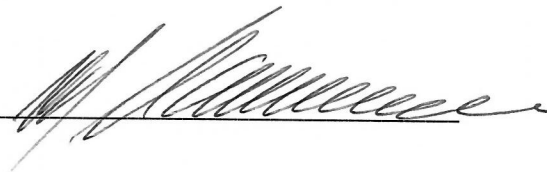
Short term storage: +2°C to +8°C

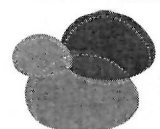
Long Term storage: -80°C

Stability: Not tested

Freezing: Can be frozen, but avoid multiple freeze/thaw cycles

07-10-2019
Date

 QC Officer

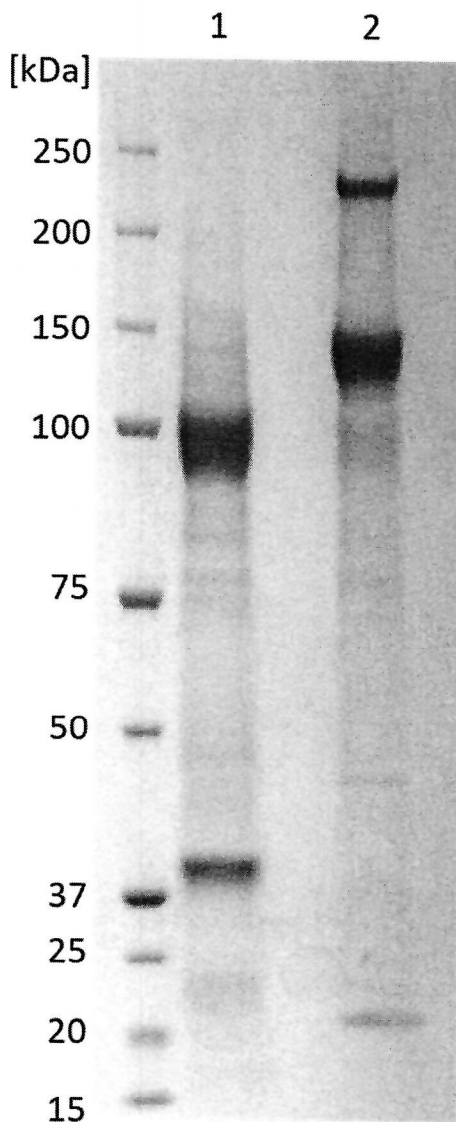


Certificate of Analysis

Name: Recombinant human immunoglobulin E (IgE)

Product code: REC31705-100 / REC31705-500

Batch #: 1906031529P



1: REC31705 batch 1906031529P, reducing [5ug]
2: REC31705 batch 1906031529P, non-reducing [5ug]