

Antibody Datasheet

Product Name:	Mouse anti Mayaro Virus E2
Clone number:	M988
Isotype:	Mouse IgG2a
Product code:	MAB12371-100 MAB12371-500
Batch Number:	
Amount:	0.1mg
Concentration:	1 mg/ml
Buffer:	0.015 M potassium phosphate, 0.85% NaCl, pH7.2.
Preservative:	0.05% Sodium Azide (NaN ₃)
Purity:	Purified by Ion Exchange. >90% purity by SDS-PAGE.
Antigen:	Recombinant Mayaro Virus E2 antigen, Strain Acre27.
Specificity:	This antibody is specific for Mayaro virus E2 and detects MAYV E2 protein and virus-like particles (VLP) in ELISA and Western blot. It does not cross-react with Chikungunya virus (CHIKV) VLP, CHIKV E1, CHIKV E2, O'nyong'nyong virus (ONNV) VLP or Ross River virus (RRV) VLP. See data below.
Matched Pairs:	Suggested pairs include MAB12372 or MAB12373 for capture paired with MAB12371 for detection. See our Matched Pair Antibodies for more information.
Applications:	For Research Use Only. Not intended for diagnostic use. Suitable for use in immunoassay development or other applications.
Secondary reagents:	Goat anti mouse IgG:HRP (PAB21441HRP)



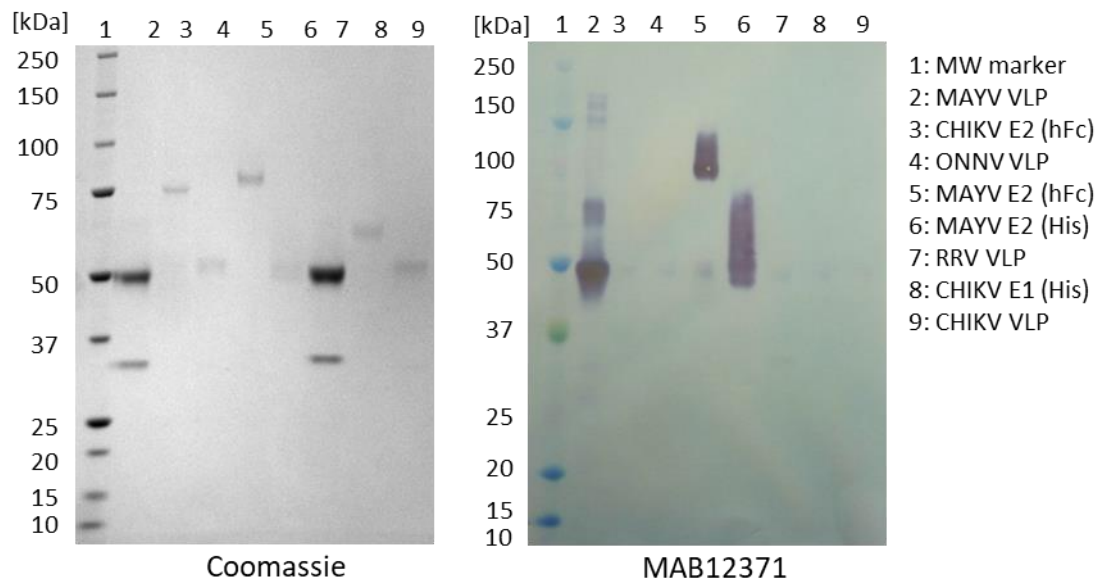
PanBlock ELISA Blocking Buffer ([BUF81201](#))

Storage: Store at +4°C for up to three months, or at -20°C for longer.

The Antibody is shipped at ambient temperature.
Avoid repeated freeze/thaw cycles.

Western Blot

100ng of each antigen was used for SDS-PAGE, in reduced form. Proteins were transferred using Transblot for 7 min. at 25V. 5% dry milk in PBS-T was used as blocking buffer and dilution buffer for antibodies. Primary antibodies and goat anti-mouse-IgG-HRP secondary antibody (Biorad 103005) were used at 1:1000. All steps were carried out for 1h at room temperature with gentle rocking. KPL Membrane TMB was used for detection. Development time 30 sec.

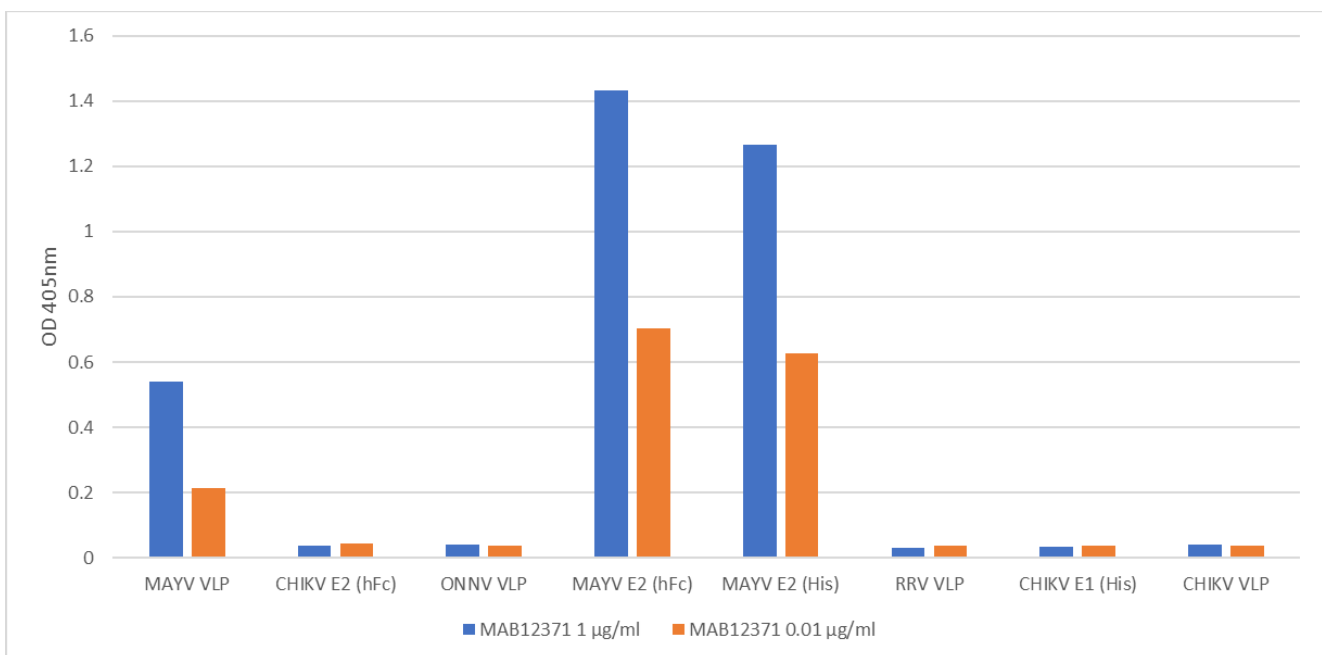


Antibody was specific for Mayaro E2 protein (His-tag and human Fc-tag) and virus-like particles containing E2 protein (MAYV VLP). It did not cross-react with Chikungunya virus (CHIKV) VLP, CHIKV E1 protein or CHIKV E2 protein, O'nyong nyong virus VLP (ONNV VLP) or Ross River virus VLP (RRV VLP).



ELISA

- **Plate coating:** All antigens coated at 0.5µg/ml at RT in DPBS overnight at 2-8°C.
- **Plate blocking:** Plate washed 1 X 300µl/well TBS + 0.1% Tween20, blocked 300µl/well DPBS+1% BSA 1h at room temperature.
- **Detection antibody:** Antibody diluted to 1.0µg/ml and 0.01µg/ml in DPBS + 1% BSA + 0.05% T20. Added at 100ul/well, incubated shaken 2h room temperature. Plate washed 3 X 300µl/well TBS-T wash buffer.
- **Secondary antibody:** Biorad goat anti-mouse IgG-HRP (103005) diluted 1 in 10000 in DPBS/1%BSA/0.05%T20, added at 100µl/well, incubated shaken 1h room temperature. Plate washed 6X 300µl/well TBS-T wash buffer.
- **Detection:** SureBlue TMB (KPL/Seracare) substrate added at 100µl/well and the plate developed for 3 min. static on the bench.
- **Stop:** Reaction stopped with 100µl/well 1M HCL and the plate was read within 5 min. at 405nm.



Antibody was specific for Mayaro E2 protein (His-tag and human Fc-tag) and virus-like particles containing E2 protein (MAYV VLP). It did not cross-react with Chikungunya virus (CHIKV) VLP, CHIKV E1 protein or CHIKV E2 protein, O'nyong nyong virus VLP (ONNV VLP) and Ross River virus VLP (RRV VLP).

