

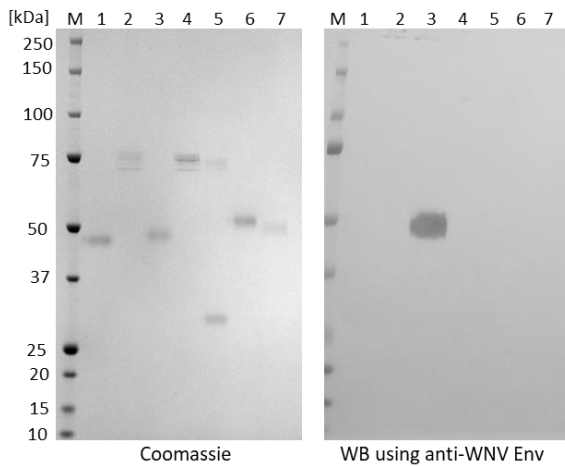
Antibody Datasheet

| | |
|------------------------|--|
| Product Name: | Anti West Nile Virus (WNV) Envelope protein |
| Product: | Recombinant monoclonal antibody to WNV Envelope protein |
| Clone number: | 9E2 |
| Isotype: | Rabbit IgG, Kappa |
| Product code: | MAB12297-100 MAB12297-200 |
| Batch Number: | |
| Amount: | 0.1 ml 0.2 ml |
| Concentration: | 1 mg/ml |
| Physical State: | Liquid |
| Buffer: | PBS with 0.02% Proclin 300 |
| Immunogen: | Purified WNV virions (Vlg99-27889) |
| Purification: | Protein A affinity chromatography |
| Specificity: | This antibody binds to protein E, between amino acids 321 and 466, of a range of WNV strains, including Hp-94, Vlg99-27889, A-72, Vlg00-27924, Tur-2914, Eg101 and A-1640. |
| Applications: | NTRL, WB, ELISA |



Storage: Store at 4°C for up to 3 months. For longer storage, aliquot and store at -20°C. Avoid cycles of freezing and thawing.

Western Blot data: WB using anti- WNV envelope protein antibody (MAB12297)



| Lane | Antigen | WB |
|------|----------------------------|----|
| 1 | JEV Envelope (REC31688) | ✘ |
| 2 | TBEV Envelope (REC31672) | ✘ |
| 3 | WNV Envelope (REC31614) | ✓ |
| 4 | YFV Envelope (REC31624) | ✘ |
| 5 | YFV Envelope (REC31627) | ✘ |
| 6 | DENV2 Envelope (DENV2-ENV) | ✘ |
| 7 | ZIKV Envelope (ZIKVSU-ENV) | ✘ |

✓/✘ indicates presence/absence of band on Western blot

