

Antibody Datasheet

Name: Human IgM Anti SARS-CoV-2 Nucleoprotein Antibody (CR3009)

Product Code: MAB12435-50

Batch #:

Date of Manufacture:

Product Description: This is a recombinant monoclonal antibody which has been reformatted using the variable domain sequences of the original Human IgG1 format.

Clone Number: CR3009

Isotype: Human IgM, Kappa

Amount: 0.05 mg

Concentration: 1.0 mg/ml

Presentation: Liquid

Buffer: PBS

Preservative: 0.02% Proclin 300.

Immunogen: The original antibody was generated by cloning the variable regions of the scFvs selected from phage display libraries into separate vectors for IgG1 heavy-chain and light-chain expression.

Purification: Affinity purified using a recombinant lectin column. This antibody does not have a J-chain and therefore presents as a hexamer, rather than a pentamer.

Specificity: This antibody recognizes and binds the non-linear/conformational epitope of the N protein of SARS-CoV and also binds the SARS-CoV-2 nucleoprotein.

Applications: ELISA, IF

Matched Pair: Competitive ELISA of this antibody with CR3018 suggests that both these antibodies bind different epitopes of the N protein of SARS-CoV. Thus, a combination of these two antibodies is suggested for virus capture assays.

Usage Guidelines

Short Term Storage: Up to 3 months at +4°C

Long Term Storage: -20°C

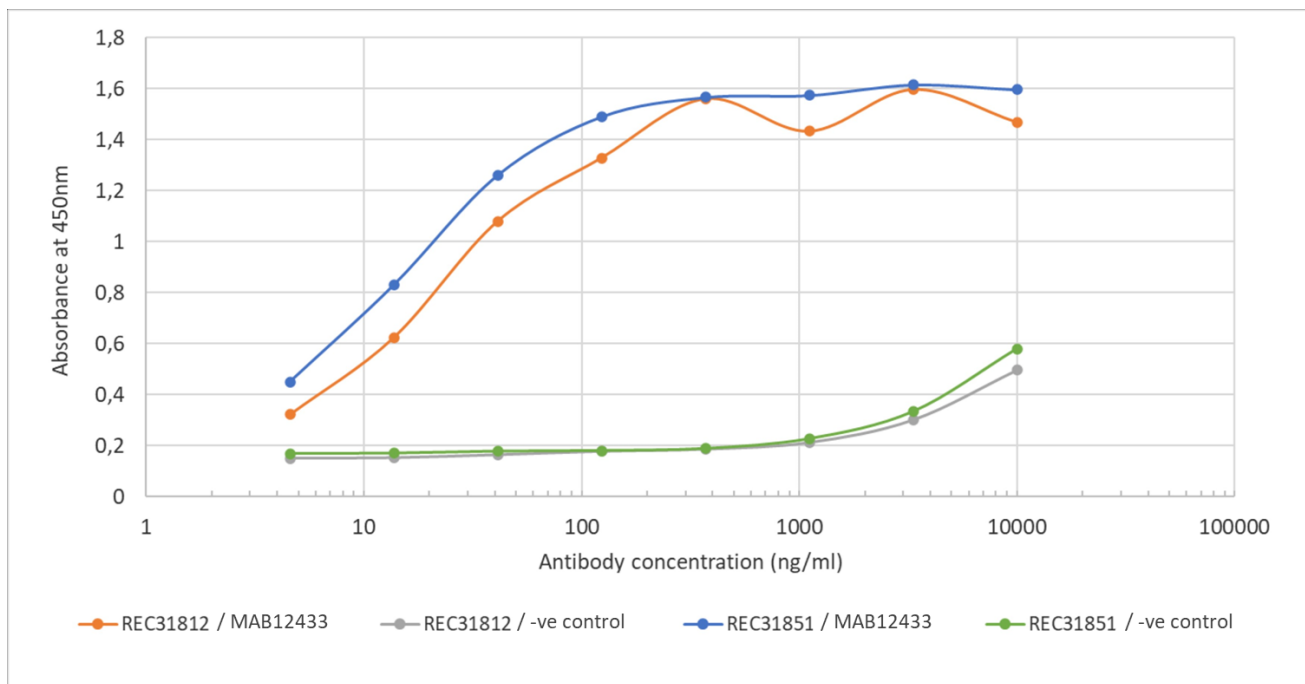


Antibody Datasheet

Name: Human IgM Anti SARS-CoV-2 Nucleoprotein Antibody (CR3009)

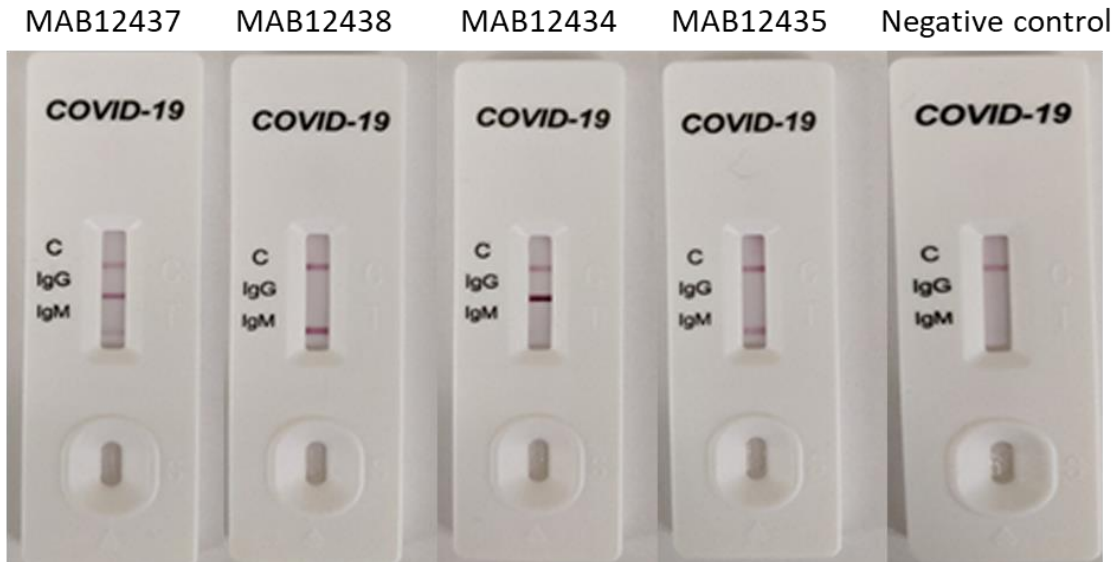
Product Code: MAB12435-50

Antigen-down ELISA: Binding curve of Rabbit IgG format antibody to SARS-CoV-2 nucleoproteins.



Binding curve of Rabbit Anti SARS-CoV-2 Nucleoprotein Antibody (CR3009) to SARS-CoV-2 Nucleoproteins (REC31812 and [REC31851](#)). ELISA Plate coated with SARS-CoV-2 Nucleoproteins (REC31812/REC31851) at a concentration of 5 µg/ml. A 3-fold serial dilution from 10,000 ng/ml was performed using [MAB12433](#). For detection, a 1:4000 dilution of HRP-labelled anti-rabbit antibody was used. Rabbit anti-Fluorescein antibody was used as a negative control.

Rapid Test: Antibodies used as positive control in COVID-19 IgM/IgG Rapid Test CE-IVD (UNCOV-40, Elabscience).



The antibodies (from left to right) MAB12437 (CR3018, IgG1) and MAB12438 (CR3018, IgM), MAB12434 (CR3009, IgG1) and MAB12435 (CR3009, IgM), and negative control, were tested at 50 µg/ml diluted in human normal serum (SIGMA S1-100mL). Bands corresponding to IgG or IgM antibodies can be observed for CR3018 and CR3009, with no signal for the negative control.

X

QC

X

QA

Products are for Research Use or for Further Manufacturing Use only. Not for Diagnostic or Therapeutic Use.