

Certificate of Analysis

Name: SARS-CoV-2 Papain-Like Protease (PLpro), Active

Product Code: REC31873-20 / REC31873-50

Batch #:

Description: Recombinant SARS-CoV-2 papain-like protease (PLpro), part of the large replicase polyprotein 1ab (E1564-Y1882), expressed in E. coli cells with an N-terminal His-tag.

Expression System: E. coli

Accession: QHD43415

Sequence Strain: SARS-CoV-2

Amino Acids: 1564-1882

Tags: His-tag, N-terminus

Molecular Weight: 38 kDa

Amount: 0.02 mg / 0.05 mg

Concentration: 0.2 mg/ml

Purity: ~90%

Presentation: Liquid

Buffer: 50mM sodium phosphate, pH7.5, 300mM NaCl, 150mM imidazole, 1mM DTT, 10% glycerol

Usage Guidelines

Short Term Storage: -80°C

Long Term Storage: -80°C

General Storage Conditions: For optimal storage, aliquot target into smaller quantities after centrifugation and store at recommended temperature. Avoid multiple freeze/thaw cycles.

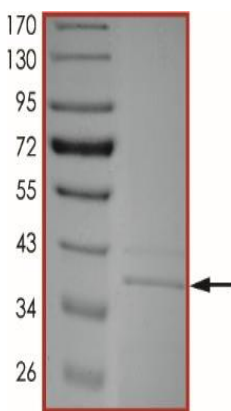
Products are for Research Use or for Further Manufacturing Use only. Not for Diagnostic or Therapeutic Use.

Certificate of Analysis

Name: SARS-CoV-2 Papain-Like Protease (PLpro), Active

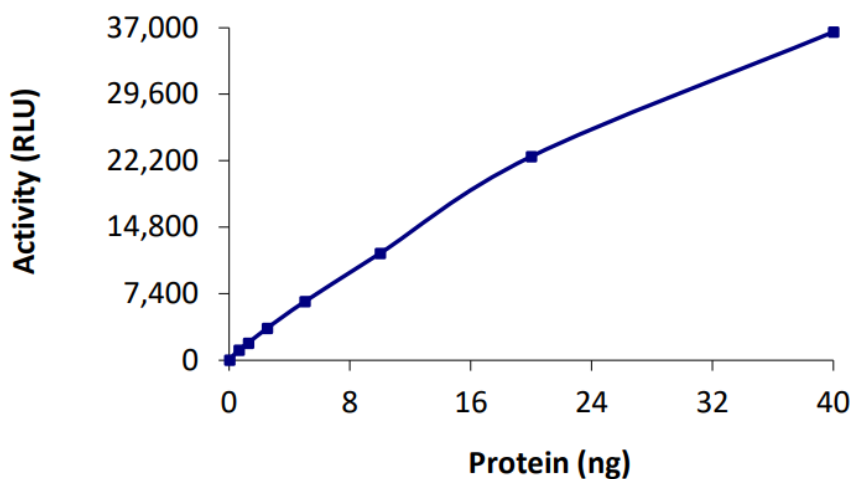
Product Code: REC31873-20 / REC31873-50

Purity: SDS-PAGE analysis



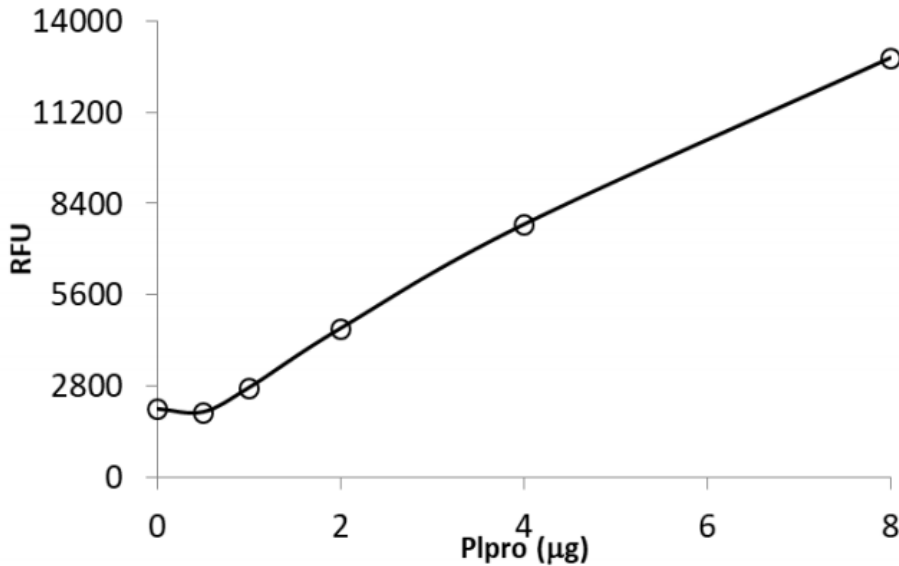
The purity of SARS-CoV-2 PLpro was determined to be ~90% by densitometry, MW ~38 kDa.

Activity: DUB activity assay



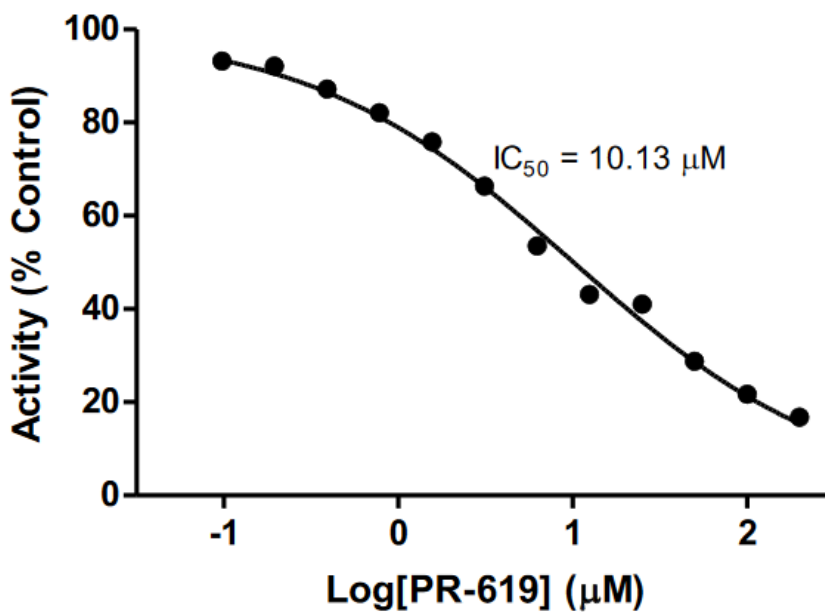
The DUB specific activity of SARS-CoV-2 PLpro was determined to be 7.2 nmol/min/mg.

Activity: Protease specific activity assay



The protease specific activity of SARS-CoV-2 PLpro was determined to be ≥ 450 pmol/min/mg at an enzyme concentration of 4µg.

Inhibition Profile: Inhibition assay in presence of DUB inhibitor



PLpro inhibition profile in the presence of various concentrations of PR-619, a broad spectrum and reversible DUB inhibitor.