

## Certificate of Analysis

**Name:** SARS-CoV-2 3C-Like Proteinase (3CLpro), Active

**Product Code:** REC31875-20 / REC31875-50

**Batch #:**

**Description:** Recombinant full-length 2019-nCoV 3CLpro, part of the large replicase polyprotein 1ab (S3264-Q3569), expressed in E. coli cells with an N-terminal His-tag.

**Expression System:** E. coli

**Accession:** QHD43415

**Tags:** His-tag, N-terminus

**Expected Molecular Weight:** 35 kDa

**Observed Molecular Weight:** 35 kDa

**Amount:** 0.02 mg / 0.05 mg

**Concentration:** 0.1 mg/ml

**Purity:** >90%

**Presentation:** Liquid

**Buffer:** 50mM sodium phosphate, pH7.5, 300mM NaCl, 200mM imidazole, 1mM DTT, 10% glycerol

### Usage Guidelines

**Short Term Storage:** -80°C

**Long Term Storage:** -80°C

**General Storage Conditions:** For optimal storage, aliquot target into smaller quantities after centrifugation and store at recommended temperature. Avoid multiple freeze/thaw cycles.

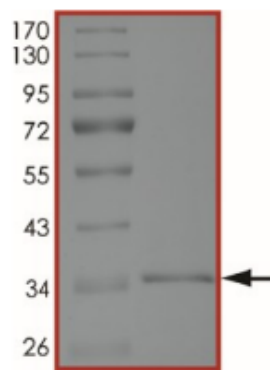
**Products are for Research Use or for Further Manufacturing Use only. Not for Diagnostic or Therapeutic Use.**

## Certificate of Analysis

**Name:** SARS-CoV-2 3C-Like Proteinase (3CLpro), Active

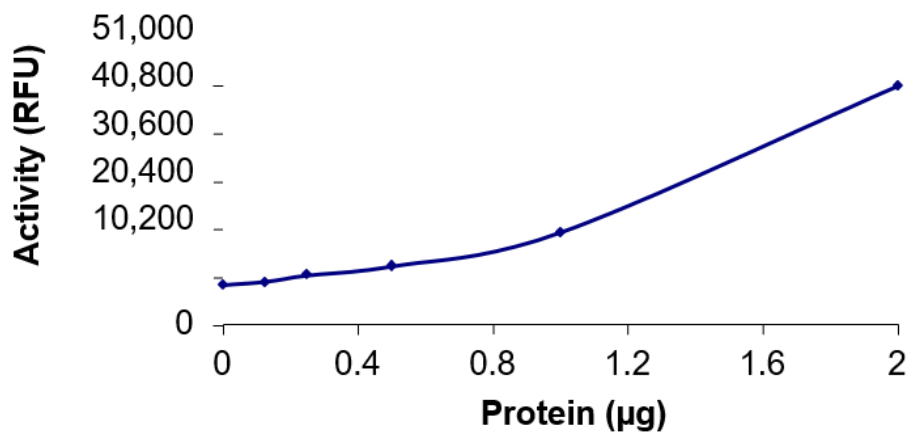
**Product Code:** REC31875-20 / REC31875-50

**Purity:**



The purity was determined to be >90% by densitometry. MW ~35 kDa.

**Activity Assay:**



The protease specific activity of 3CLpro was determined to be 4170 pmol/min/mg at an enzyme concentration of 1.2 µM.