

Antibody Datasheet

Name: Mouse Anti SARS-CoV-2 Spike (S1) Antibody (FH4)

Product Code: MAB12441-100 / MAB12441-500

Batch #: 20092212

Date of Manufacture: 22-SEP-2020

Product Description: Purified Monoclonal Antibody

Clone Number: FH4.C2.E8.D8

Isotype: IgG1 Kappa

Amount: 0.1 mg / 0.5 mg

Concentration: 0.9 mg/ml

Presentation: Liquid

Buffer: Phosphate Buffered Saline, pH 7.4, Filter Sterile

Immunogen: SARS-CoV-2 Spike subunit 1 (S1), REC31806 (aa 1-674)

Purification: Protein G

Specificity: SARS-CoV-2 Spike subunit 1 (S1). Antibody also binds to SARS-CoV-2 mutant spike proteins REC31899 (D614G, S477N), REC31900 (D614G, L84I, N439K), REC31901 (D614G, G485R), REC31902 (D614G, E484K) and REC31903 (D614G, V445I, H655Y, E583D), and N-terminal domain (NTD, REC31835). No cross-reactivity observed in ELISA with SARS-CoV-2 RBD, SARS-CoV-2 spike subunit 2 (S2) or spike proteins from SARS-CoV, MERS-CoV, HCoV-NL63, HCoV-OC43, HCoV-229E and HCoV-HKU1.

Applications: ELISA, WB

Application Notes: Working dilution must be determined by the user. Suggested starting ranges are 0.01-0.1 µg/ml for ELISA.

Matched Pair: Suitable for use as capture or detection antibody in ELISA assays. Capture antibody with MAB12446 as detection antibody. Detection antibody with MAB12422 or MAB12446 as capture antibody. (see data below).

Usage Guidelines

Short Term Storage: +4°C

Long Term Storage: -20°C

Storage Guidelines: Avoid repeat freeze-thaw cycles



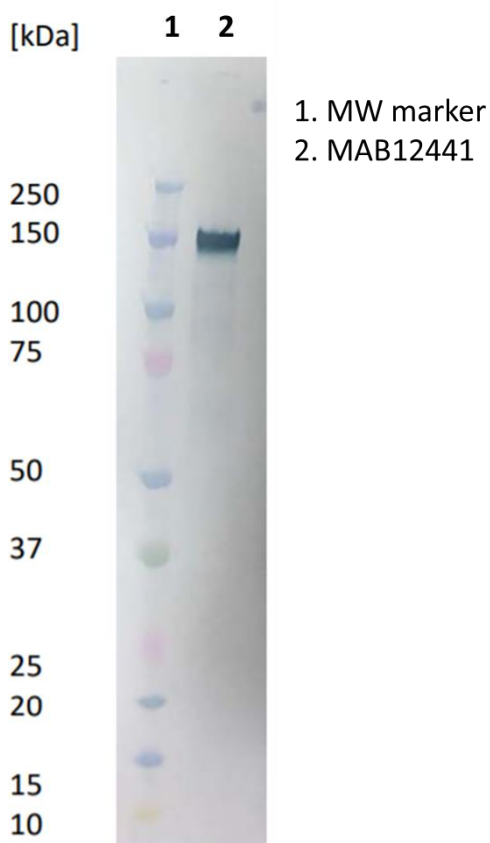
Antibody Datasheet

Name: Mouse Anti SARS-CoV-2 Spike (S1) Antibody (FH4)

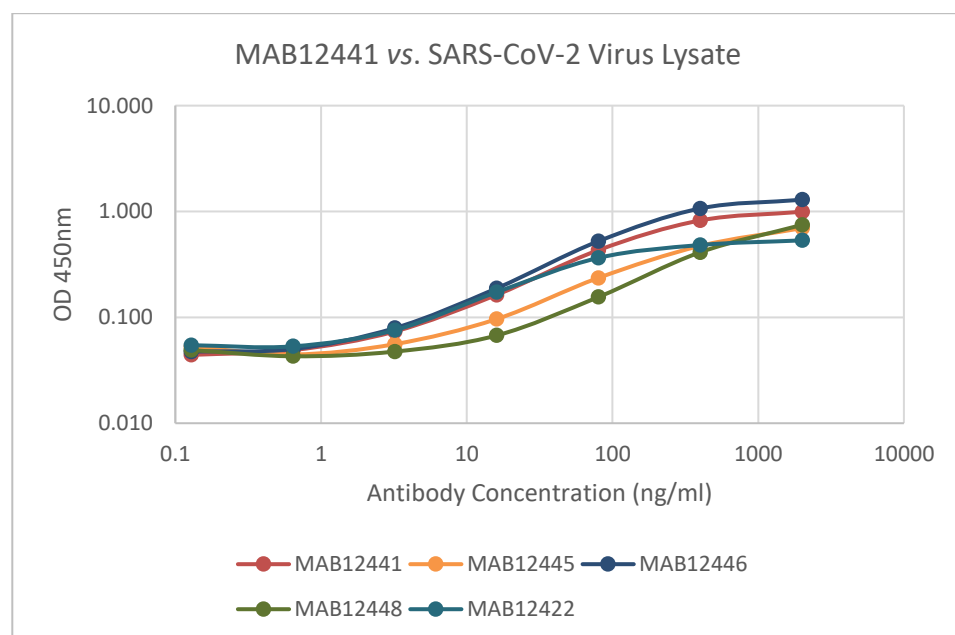
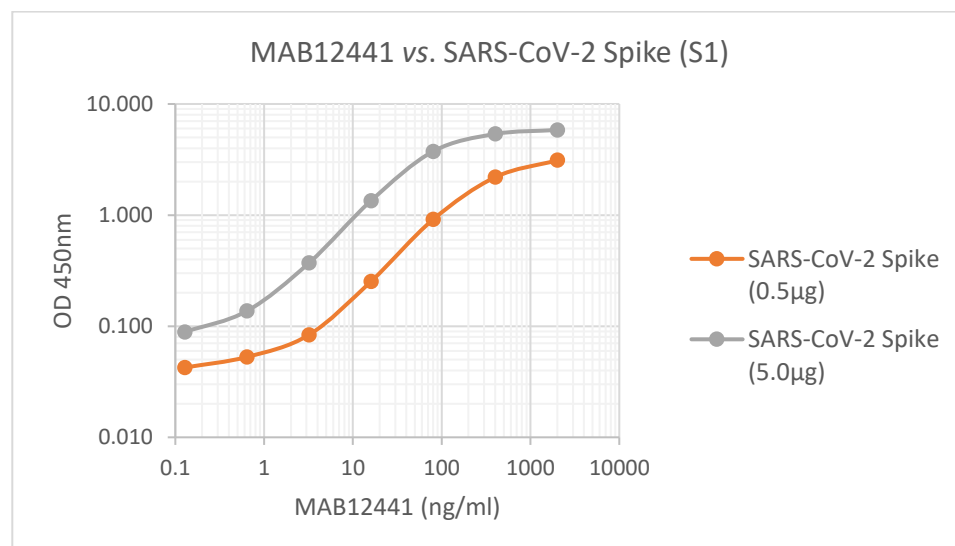
Product Code: MAB12441-100 / MAB12441-500

Batch #: 20092212

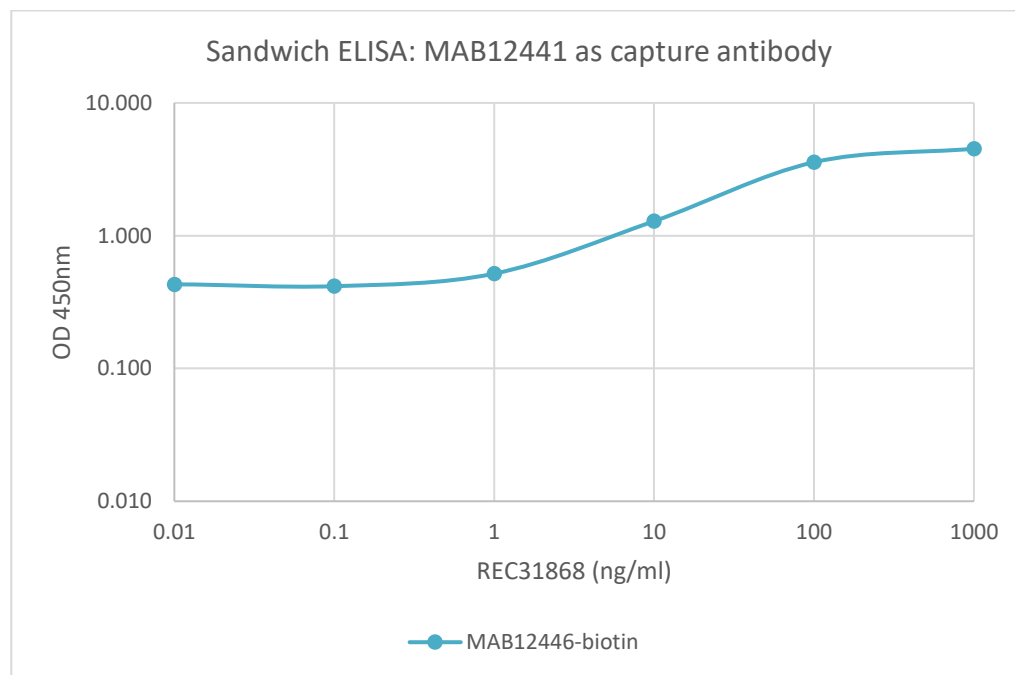
Western Blot: 10µl (0.02mg/ml) of SARS-CoV-2 spike S1 protein (REC31806) separated on a Novex 4-12% Bis-Tris gel, alongside a Kaleidoscope marker (BioRad). Primary antibody added at 1 mg/ml (1:1000) and Goat anti mouse secondary antibody (PAB21441HRP) added at 1mg/ml (1:2000).



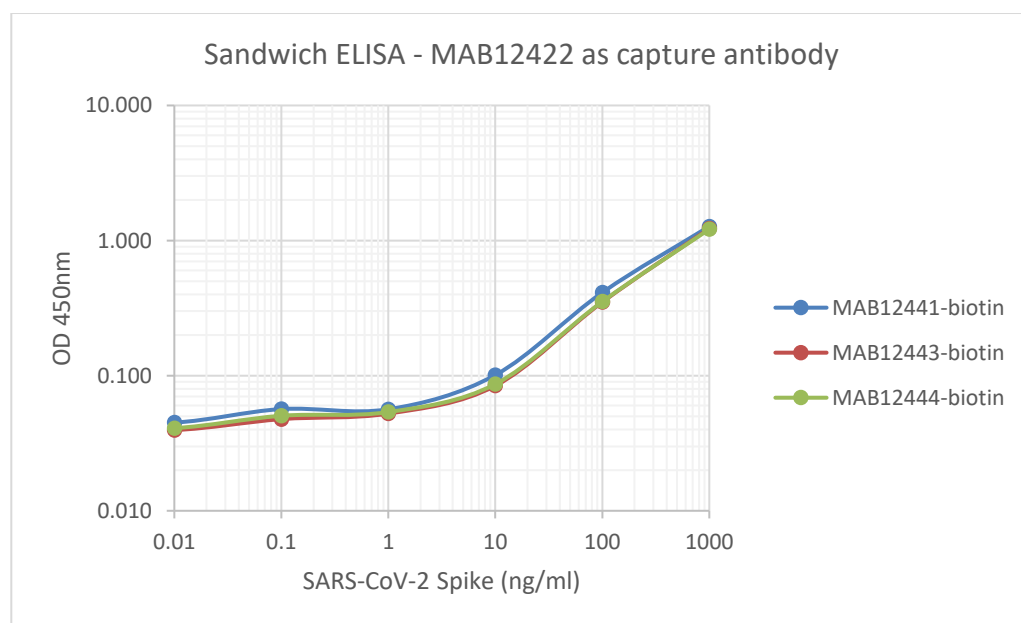
Antigen-down ELISA: ELISA showing binding of MAB12441 to immobilised SARS-CoV-2 spike subunit 1 (S1) protein ([REC31806](#)) and SARS-CoV-2 virus lysate ([NAT41605](#)).

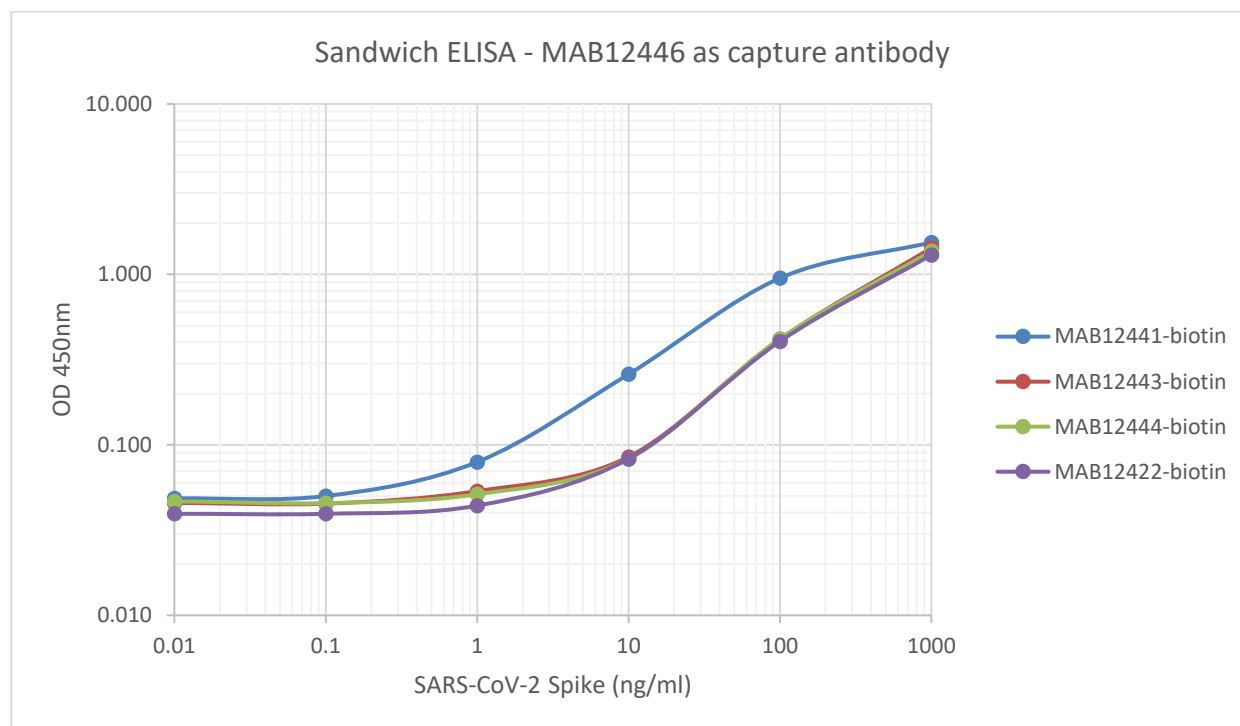


Sandwich ELISA: MAB12441 as capture antibody. SARS-CoV-2 full-length Spike (REC31868) was the capture analyte. Plates were coated with 5µg/ml of MAB12441. Spike protein was added at varying concentrations from 1µg/ml to 0.001ng/ml. Plates were incubated with biotin-labelled MAB12446 detection antibody at 0.9µg/ml.

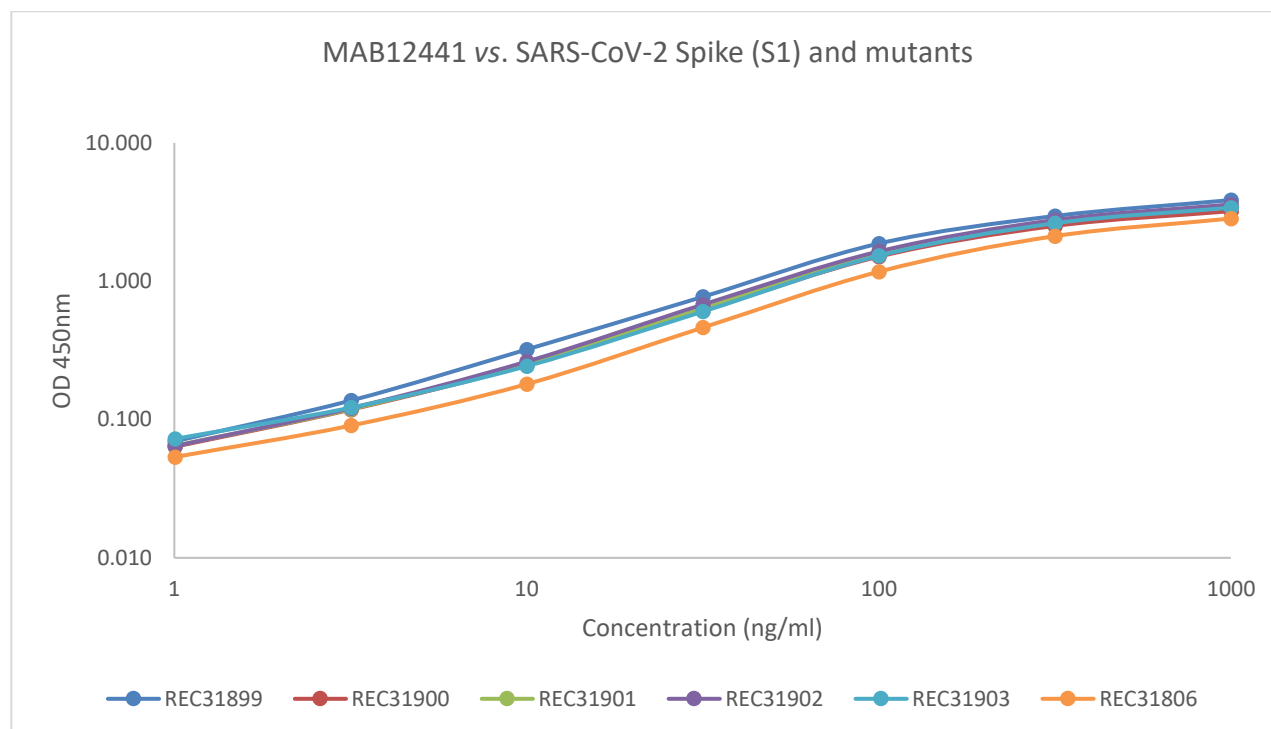


Sandwich ELISA: MAB12441 as detection antibody. SARS-CoV-2 full-length Spike (REC31868) was the capture analyte. Plates were coated with 5µg/ml of MAB12422. Spike protein was added at varying concentrations from 1µg/ml to 0.001ng/ml. Plates were incubated with biotin-labelled detection antibodies at 1µg/ml.

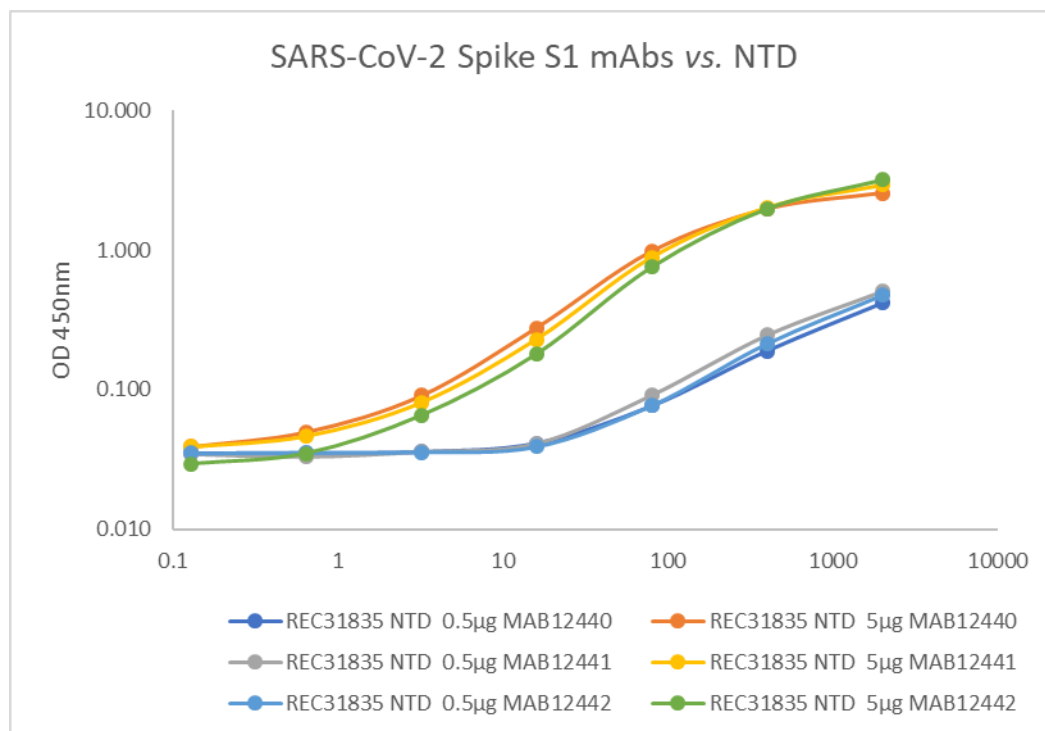




ELISA: Binding of antibody to SARS-CoV-2 spike subunit 1 (S1) protein (REC31806) and mutant S1 proteins.



ELISA: Binding of antibody to SARS-CoV-2 N-terminal domain (NTD).



X

QC

X

QA

Products are for Research Use or for Further Manufacturing Use only. Not for Diagnostic or Therapeutic Use.



www.thenativeantigencompany.com
VAT No: 102038475

contact@thenativeantigencompany.com
Registration No. 7386339

Page 6 of 7

The Native Antigen Company is now part of LGC Group.

Science for a Safer World

Products are for Research Use or for Further Manufacturing Use only. Not for Diagnostic or Therapeutic Use.