

## Antibody Datasheet

**Name:** Mouse Anti SARS-CoV-2 Spike (S1) Antibody (HH10)

**Product Code:** MAB12442-100 / MAB12442-500

**Batch #:** 20092212

**Date of Manufacture:** 22-SEP-2020

**Product Description:** Purified Monoclonal Antibody

**Clone Number:** HH10.G2.A9.E8

**Isotype:** IgG1 Kappa

**Amount:** 0.1 mg / 0.5 mg

**Concentration:** 1.0 mg/ml

**Presentation:** Liquid

**Buffer:** Phosphate Buffered Saline, pH 7.4, Filter Sterile

**Immunogen:** SARS-CoV-2 Spike subunit 1 (S1), REC31806 (aa 1-674)

**Purification:** Protein G

**Specificity:** SARS-CoV-2 Spike subunit 1 (S1). Antibody also binds to SARS-CoV-2 mutant spike proteins REC31899 (D614G, S477N), REC31900 (D614G, L84I, N439K), REC31901 (D614G, G485R), REC31902 (D614G, E484K) and REC31903 (D614G, V445I, H655Y, E583D), and N-terminal domain (NTD, REC31835). No cross-reactivity observed in ELISA with SARS-CoV-2 RBD, SARS-CoV-2 spike subunit 2 (S2) or spike proteins from SARS-CoV, MERS-CoV, HCoV-NL63, HCoV-OC43, HCoV-229E and HCoV-HKU1.

**Applications:** ELISA, WB

**Application Notes:** Working dilution must be determined by the user. Suggested starting ranges are 0.01-0.1 µg/ml for ELISA.

### Usage Guidelines

**Short Term Storage:** +4°C

**Long Term Storage:** -20°C

**Storage Guidelines:** Avoid repeat freeze-thaw cycles



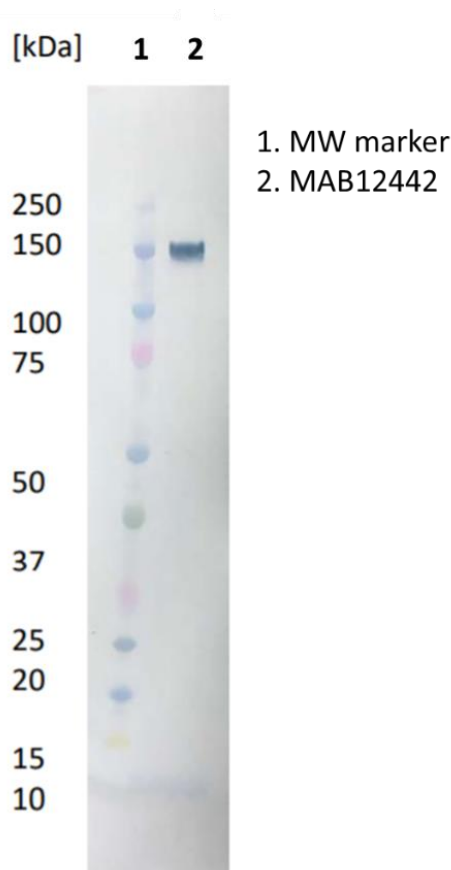
## Antibody Datasheet

**Name:** Mouse Anti SARS-CoV-2 Spike (S1) Antibody (HH10)

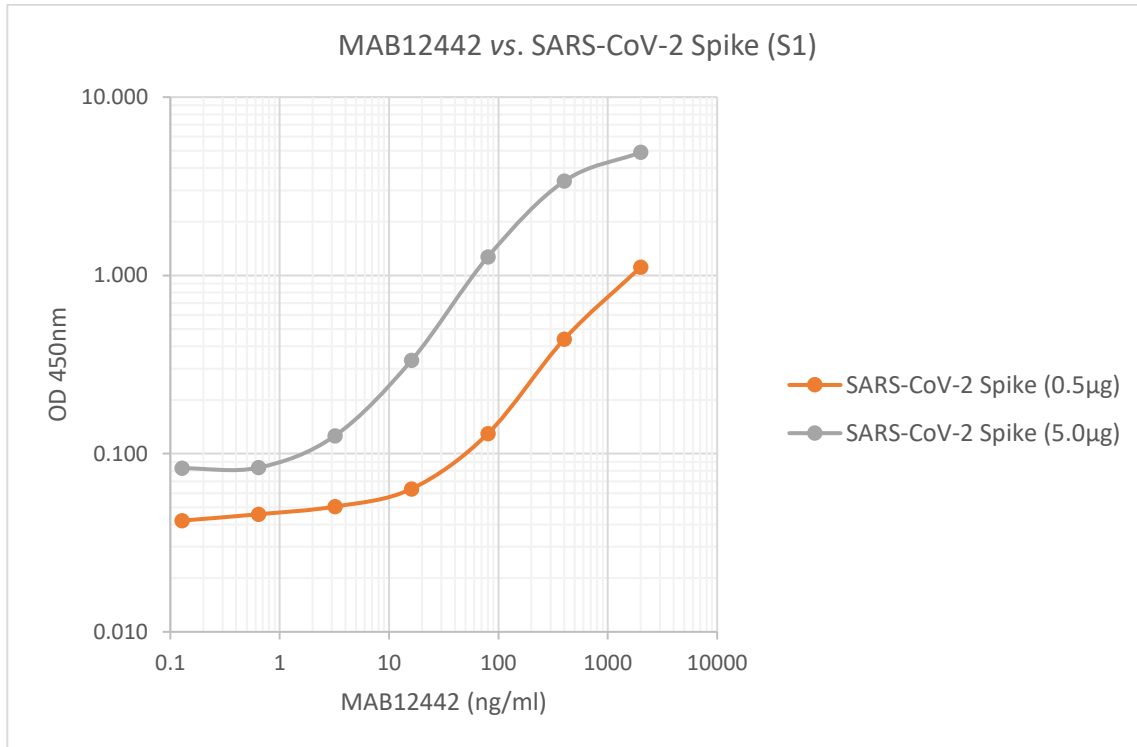
**Product Code:** MAB12442-100 / MAB12442-500

**Batch #:** 20092212

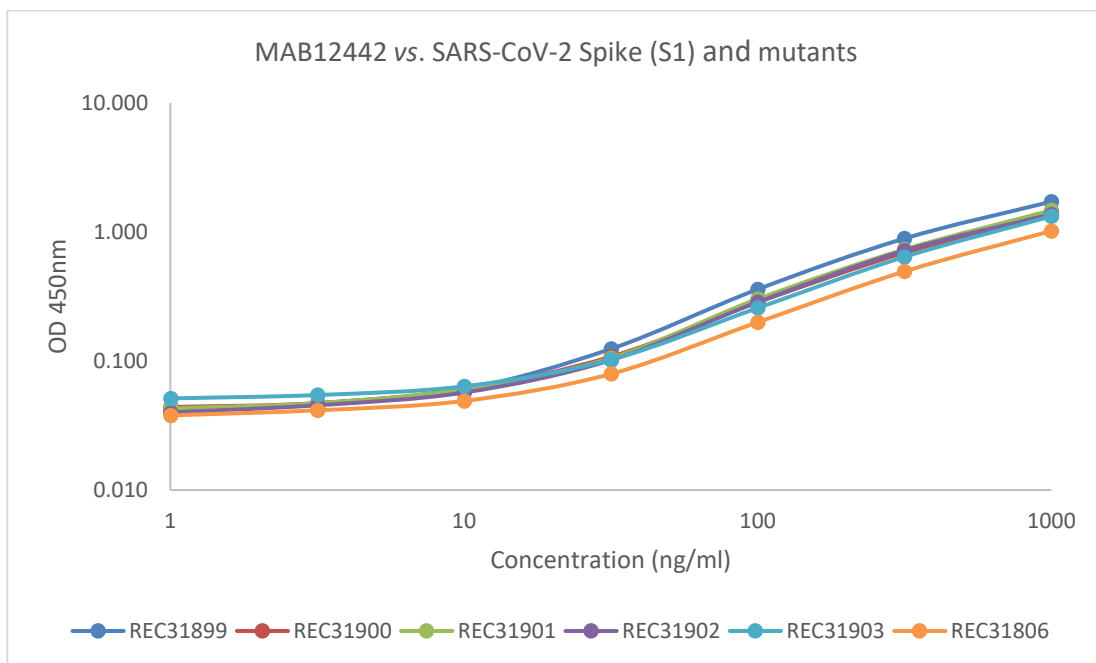
**Western Blot:** 10µl (0.02mg/ml) of SARS-CoV-2 spike S1 protein (REC31806) separated on a Novex 4-12% Bis-Tris gel, alongside a Kaleidoscope marker (BioRad). Primary antibody added at 1 mg/ml (1:1000) and Goat anti mouse secondary antibody (PAB21441HRP) added at 1mg/ml (1:2000).



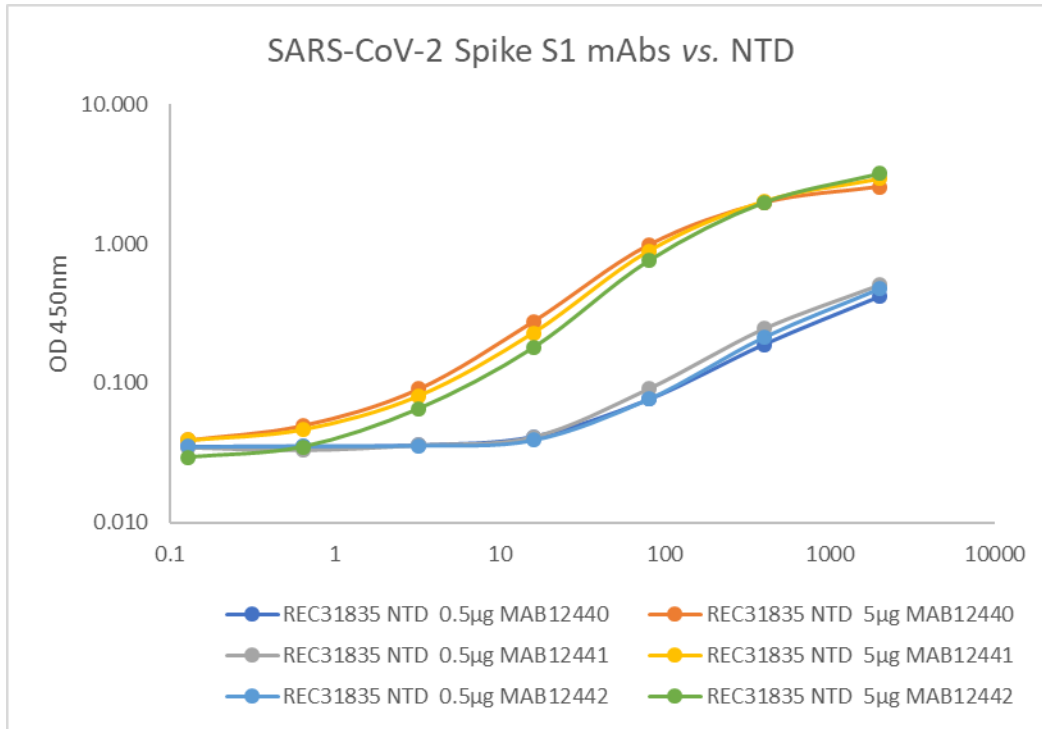
**ELISA:** Antigen-down ELISA showing binding of MAB12442 to immobilised SARS-CoV-2 spike subunit 1 (S1) protein ([REC31806](#)).



**ELISA:** Binding of antibody to SARS-CoV-2 spike subunit 1 (S1) protein (REC31806) and mutant S1 proteins.



**ELISA:** Binding of antibody to SARS-CoV-2 N-terminal domain (NTD).



X

---

QC

X

---

QA

**Products are for Research Use or for Further Manufacturing Use only. Not for Diagnostic or Therapeutic Use.**

