

Antibody Datasheet

Name: Mouse Anti SARS-CoV-2 Spike (S1) RBD Antibody (FG11)

Product Code: MAB12445-100 / MAB12445-500

Batch #:

Date of Manufacture:

Product Description: Purified Monoclonal Antibody

Clone Number: FG11.B10.E8.G8

Isotype: IgG1 Kappa

Amount: 0.1 mg / 0.5 mg

Concentration: 1.0 mg/ml

Presentation: Liquid

Buffer: Phosphate Buffered Saline, pH 7.4, Filter Sterile

Immunogen: SARS-CoV-2 Spike subunit 1 (S1), REC31882 (aa 1-223)

Purification: Protein G

Specificity: SARS-CoV-2 (Wuhan-Hu-1, UK (Alpha), South African (Beta) Brazilian (Gamma) and Indian variants) and SARS-CoV receptor binding domain (RBD). Antibody also binds to SARS-CoV-2 mutant spike proteins REC31899 (D614G, S477N), REC31900 (D614G, L84I, N439K), REC31901 (D614G, G485R), REC31902 (D614G, E484K) and REC31903 (D614G, V445I, H655Y, E583D). No cross-reactivity observed in ELISA with SARS-CoV-2 subunit 2 (S2) or spike subunit 1 (S1) proteins from MERS-CoV, HCoV-NL63, HCoV-OC43, HCoV-229E and HCoV-HKU1.

Applications: ELISA, WB

Application Notes: Working dilution must be determined by the user. Suggested starting ranges are 0.01-0.1 µg/ml for ELISA.

Usage Guidelines

Short Term Storage: +4°C

Long Term Storage: -20°C

Storage Guidelines: Avoid repeat freeze-thaw cycles



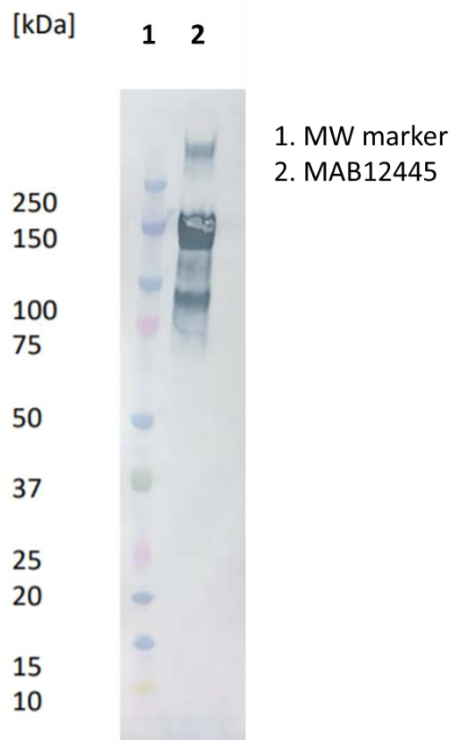
Antibody Datasheet

Name: Mouse Anti SARS-CoV-2 Spike (S1) RBD Antibody (FG11)

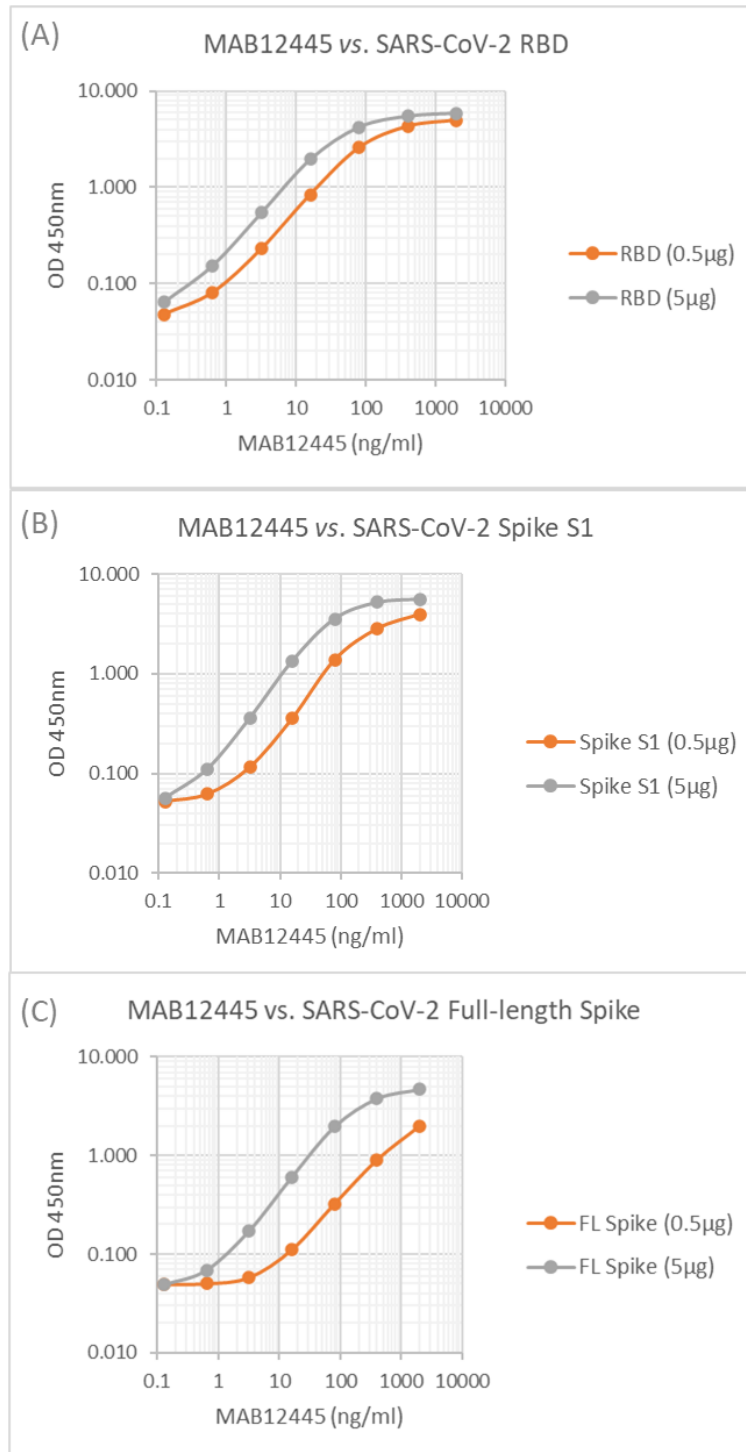
Product Code: MAB12445-100 / MAB12445-500

Batch #: 20092212

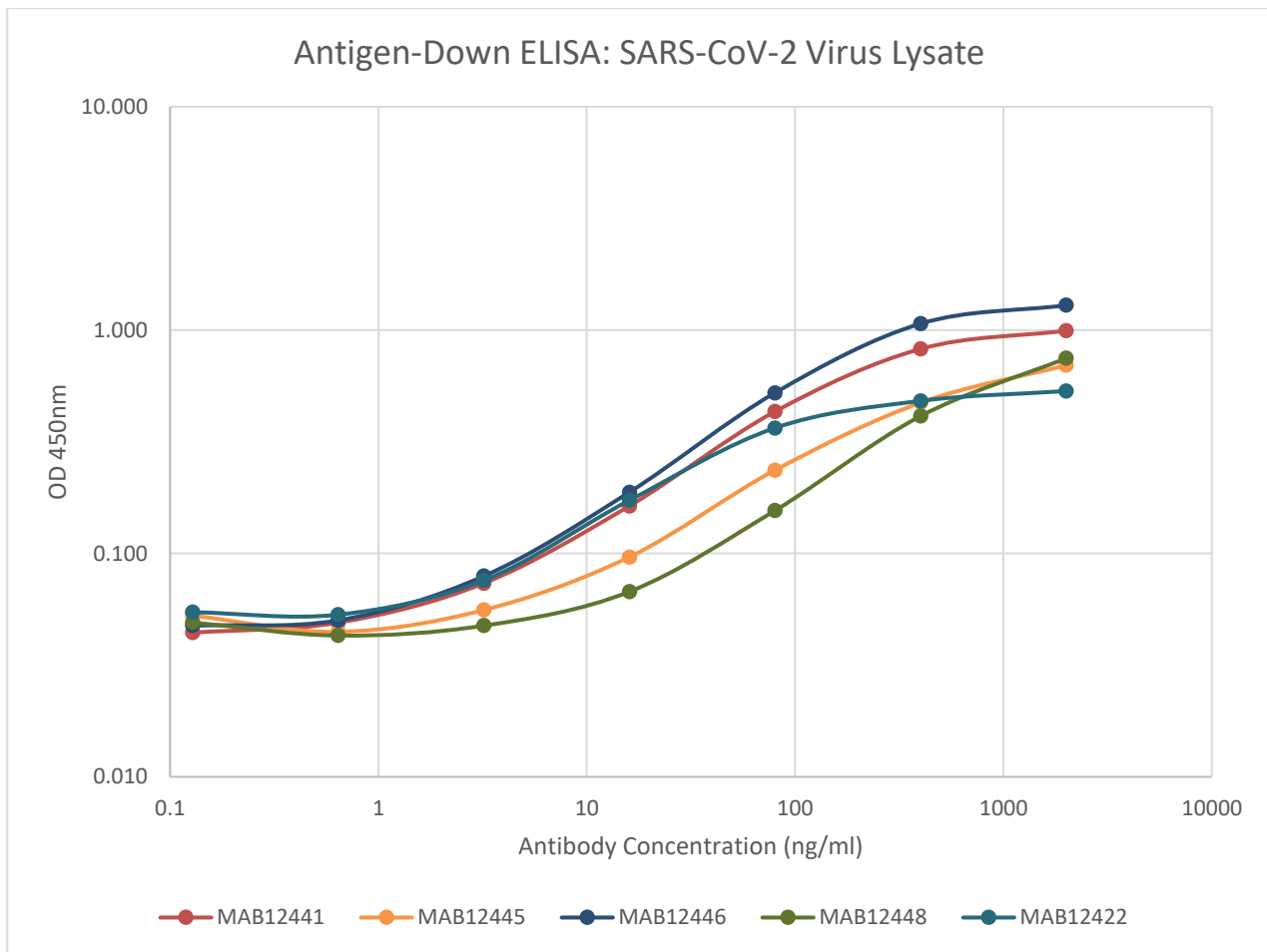
Western Blot: 10µl (0.02mg/ml) of SARS-CoV-2 spike S1 protein (REC31806) separated on a Novex 4-12% Bis-Tris gel, alongside a Kaleidoscope marker (BioRad). Primary antibody added at 1 mg/ml (1:1000) and Goat anti mouse secondary antibody (PAB21441HRP) added at 1mg/ml (1:2000).



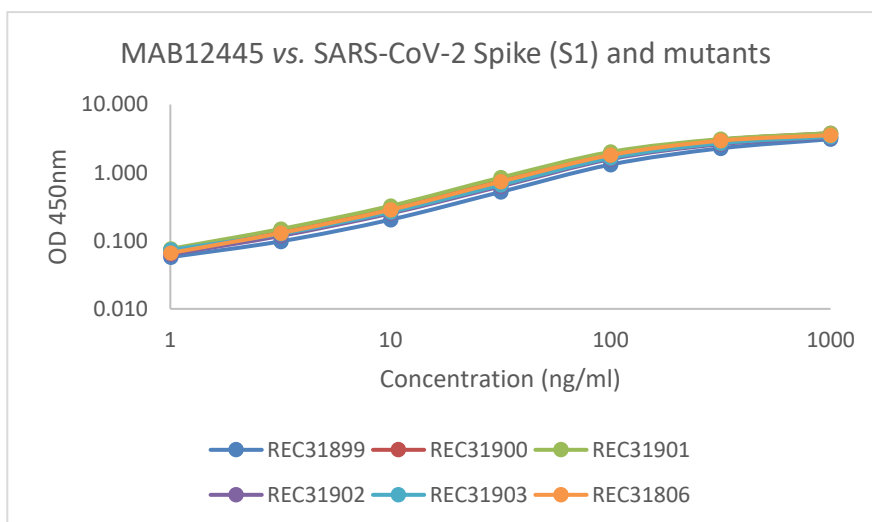
ELISA: Antigen-down ELISA showing binding of MAB12445 to (A) immobilised SARS-CoV-2 receptor binding domain (RBD) protein ([REC31882](#)) (B) Spike subunit 1 (S1) ([REC31806](#)) and (C) full-length spike protein ([REC31868](#)).



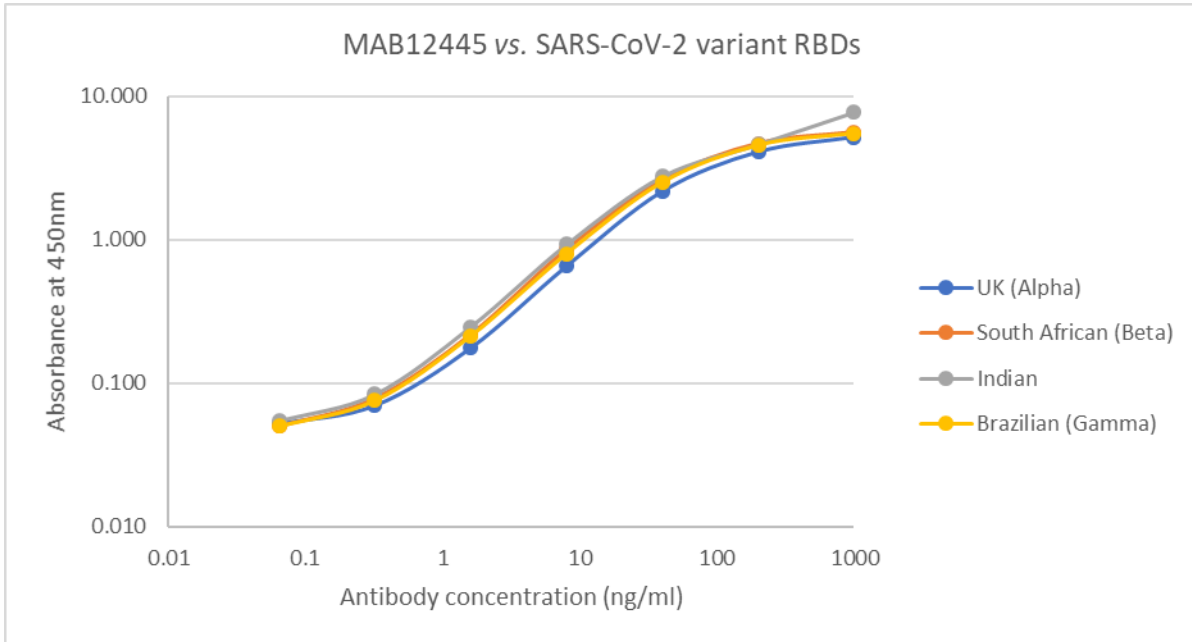
ELISA: Antigen-down ELISA showing binding of MAB12445 to immobilised SARS-CoV-2 virus lysate.



ELISA: Binding of antibody to SARS-CoV-2 spike subunit 1 (S1) protein (REC31806) and mutant S1 proteins.



Direct ELISA: Plate was coated with 100µl of variant RBD proteins (UK, REC31946; South African, REC31945; Indian, REC31971; Brazilian, REC31961), at 1µg/ml and then incubated with 100µl MAB12445 antibody, diluted from 1000ng/ml to 0.064ng/ml. Diluted secondary IgG HRP antibody (100µl at 1:10,000) was then added. 100µl of TMB substrate (M0701A) was added in all wells and the reaction stopped after 10 min. with 1M HCl and the plate read at 405/450nm.



X

QC

X

QA

Products are for Research Use or for Further Manufacturing Use only. Not for Diagnostic or Therapeutic Use.

