

## Certificate of Analysis

**Name:** Recombinant Human IgE-Fc domain

**Product Code:** REC31915-200

**Batch #:**

**Date of Manufacture:**

**Product Description:** Recombinant human immunoglobulin epsilon heavy chain constant region (IgE-Fc), manufactured in mammalian cells.

**Expression System:** HEK293

**Accession:** P01854

**Amino Acids:** V104-G427

**Tag:** 6xHis-tag, C-terminus

**Expected Molecular Weight:** 73.6 kDa

**Amount:** 0.2 mg

**Concentration:** mg/ml

**Purity:** Determined by SDS-PAGE and Coomassie Brilliant Blue staining to be >98%

**Presentation:** Liquid

**Buffer:** PBS with preservative (0.02% Proclin 300).

**Applications:** The IgE Fc domain proteins react with species-specific anti-IgE antibodies, with no cross-reactivity observed. Recommended as an immunogen to generate antibodies against Human anti-IgE-Fc; a standard/control for Human IgE-Fc assays or other Human IgE-Fc domain applications.

### Usage Guidelines

**Short Term Storage:** +4°C

**Long Term Storage:** -80°C

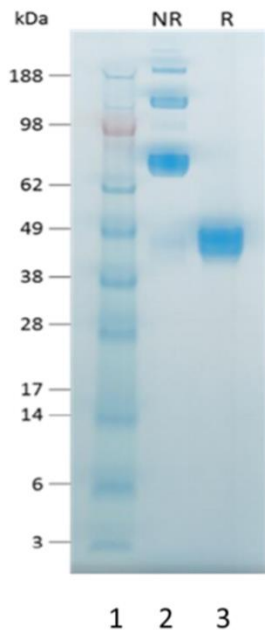
**General Storage Conditions:** Avoid repeated freeze-thaw cycles.

## Certificate of Analysis

**Name:** Recombinant Human IgE-Fc domain

**Product Code:** REC31915-200

**SDS-PAGE:** Representative coomassie-stained SDS-PAGE showing Human IgE-Fc domain resolved under non-reducing (NR) and reducing (R) conditions.



Lane 1: Molecular Mass Markers.  
Lane 2: 2.5µg Recombinant Human IgE-Fc domain resolved by SDS-PAGE under non-reducing (NR) conditions.  
Lane 3: 2.5µg Recombinant Human IgE-Fc domain resolved by SDS-PAGE under reducing conditions

X

---

QC

X

---

QA

**Products are for Research Use or for Further Manufacturing Use only. Not for Diagnostic or Therapeutic Use.**

