

Certificate of Analysis

Name: Recombinant Dog IgE-Fc domain

Product Code: REC31917-200

Batch #:

Date of Manufacture:

Product Description: Recombinant dog Immunoglobulin epsilon heavy chain constant region (IgE-Fc), manufactured in mammalian cells.

Expression System: HEK293

Tag: 6xHis-tag, C-terminus

Expected Molecular Weight: 74.89844 kDa

Amount: 0.2 mg

Concentration: mg/ml

Purity: Determined by SDS-PAGE and Coomassie Brilliant Blue staining to be >98%

Presentation: Liquid

Buffer: PBS

Applications: The IgE Fc domain proteins react with species-specific anti-IgE antibodies, with no cross-reactivity observed. Recommended as an immunogen to generate antibodies against Dog anti-IgE-Fc; a standard/control for Dog IgE-Fc assays or other Dog IgE-Fc domain applications.

Usage Guidelines

Short Term Storage: +4°C

Long Term Storage: -80°C

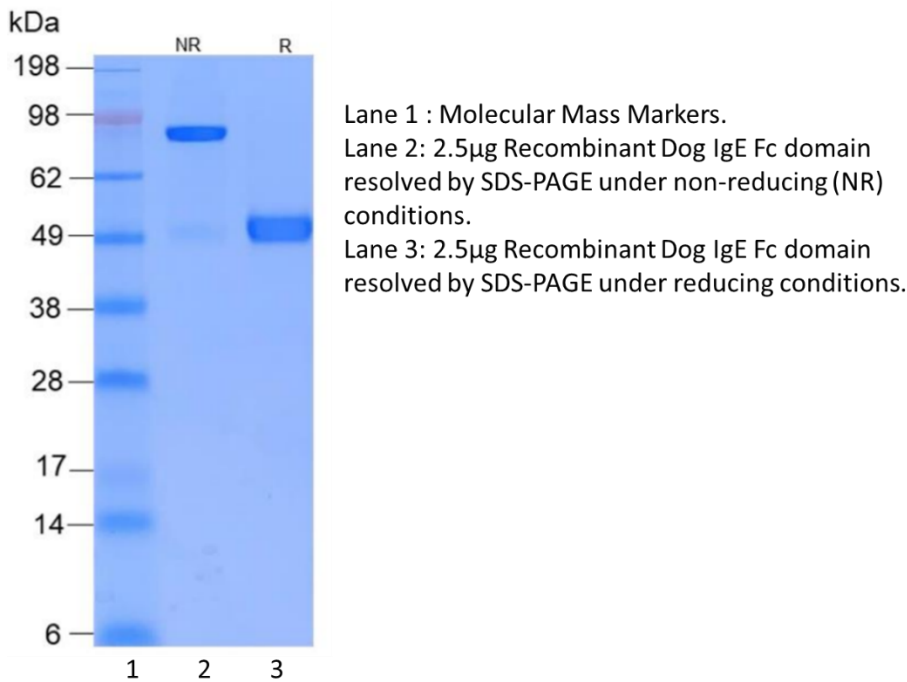
General Storage Conditions: Avoid repeated freeze-thaw cycles.

Certificate of Analysis

Name: Recombinant Dog IgE-Fc domain

Product Code: REC31917-200

SDS-PAGE: Representative coomassie-stained SDS-PAGE showing Dog IgE-Fc domain resolved under non-reducing (NR) and reducing (R) conditions.



X

QC

X

QA

Products are for Research Use or for Further Manufacturing Use only. Not for Diagnostic or Therapeutic Use.

