

Certificate of Analysis

Name: Human T-Cell Lymphotropic Virus Type 1 (HTLV-1) Envelope Protein, Sheep Fc-Tag (HEK293)

Product Code: REC31920-100 / REC31920-500

Batch #:

Date of Manufacture:

Product Description: Recombinant human T-cell lymphotropic virus type 1 (HTLV-1) envelope protein.

The protein was produced in HEK293 cells and purified from culture supernatant with a TEV cleavage site and C-terminal sheep Fc-tag.

Expression System: HEK293

Accession: P23064.1

Strain/Isolate: MT-2

Amino Acids: 1-442

Tag: Sheep Fc-tag, C-terminus

Expected Molecular Weight: 75 kDa

Observed Molecular Weight: ~90 kDa

Amount: 0.1 mg / 0.5 mg

Concentration: mg/ml

Purity: >90%

Presentation: Liquid

Buffer: DPBS

Usage Guidelines

Short Term Storage: -80°C

Long Term Storage: -80°C

Stability: Not determined

Freezing: Can be frozen



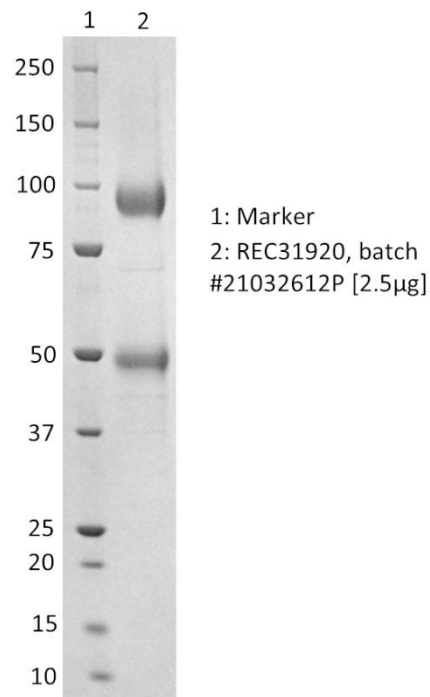
Certificate of Analysis

Name: Human T-Cell Lymphotropic Virus Type 1 (HTLV-1) Envelope Protein, Sheep Fc-Tag (HEK293)

Product Code: REC31920-100 / REC31920-500

Batch #:

SDS-PAGE: Representative Coomassie-stained reducing SDS-PAGE showing purified Human T-Cell Lymphotropic Virus Type 1 (HTLV-1) envelope protein. Furin cleavage of the envelope protein occurs during the production process resulting in two bands. Both bands comprise the envelope protein as detected by western blot with anti-Fc tag.



X

QC

X

QA

Products are for Research Use or for Further Manufacturing Use only. Not for Diagnostic or Therapeutic Use.