

Certificate of Analysis

Name: Human T-Cell Lymphotropic Virus Type 2 (HTLV-2) Envelope Protein, Sheep Fc-Tag (HEK293)

Product Code: REC31921-100 / REC31921-500

Batch #:

Date of Manufacture:

Product Description: Human T-cell Leukemia Virus 2 (HTLV-2) Envelope Protein produced in HEK293 cells with a TEV cleavable C-terminal sheep Fc-tag. The protein was purified from culture supernatant by Protein A chromatography and Hydrophobic Interaction Chromatography. The furin cleavage site in the Envelope protein was enhanced to increase the efficiency of cleavage in HEK293 cells.

Expression System: HEK293

Accession: NP_041006.1

Amino Acids: 1-438

Tag: Sheep Fc-tag, C-terminus

Expected Molecular Weight: 48 kDa

Observed Molecular Weight: 48 kDa (furin processed); 90 kDa (not furin processed)

Amount: 0.1 mg / 0.5 mg

Concentration: mg/ml

Purity: >90%

Presentation: Liquid

Buffer: DPBS

Usage Guidelines

Short Term Storage: -80°C

Long Term Storage: -80°C

Stability: Not determined

Freezing: Can be frozen

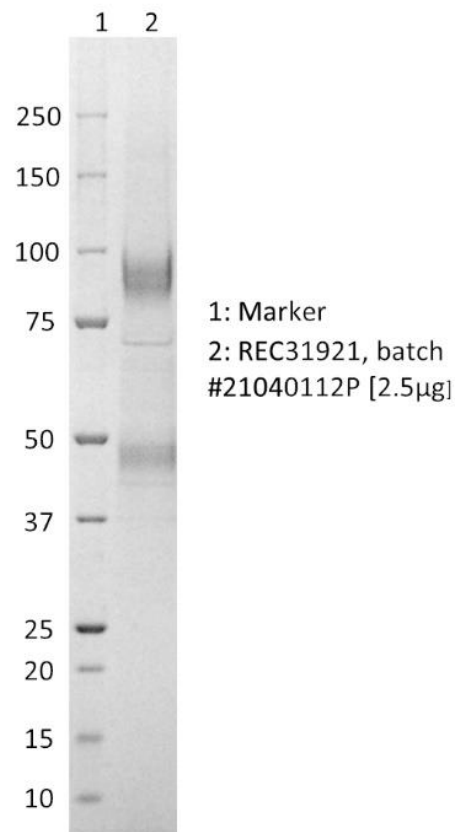
Certificate of Analysis

Name: Human T-Cell Lymphotropic Virus Type 2 (HTLV-2) Envelope Protein, Sheep Fc-Tag (HEK293)

Product Code: REC31921-100 / REC31921-500

Batch #:

SDS-PAGE: Representative Coomassie-stained reducing SDS-PAGE showing purified HTLV-2 envelope protein. The band present at 48 kDa represents furin-processed material; the 90 kDa band is not furin processed.



X

QC

X

QA

Products are for Research Use or for Further Manufacturing Use only. Not for Diagnostic or Therapeutic Use.