

Antibody Datasheet

Name: Rabbit Anti-Pasteurella Multocida Toxin Antibody

Product Code: PAB21483-200

Batch #:

Date of Manufacture:

Product Description: Anti-Pasteurella multocida toxin antibody, rabbit polyclonal.

Isotype: IgG

Amount: 0.2 mg

Concentration: 2.0 mg/ml

Presentation: Liquid

Buffer: PBS, 50% glycerol

Stabilizer: None

Preservative: None

Immunogen: Purified recombinant Pasteurella multocida toxoid (His6-tagged at N-terminus of full-size PMT).

Purification: Affinity-purified with protein A/G mix from rabbit antiserum.

Specificity: Reacts with P. multocida toxin

Applications: Western blotting (1/500-1/1,000 dilution), Dot blot (assay dependent), ELISA (assay dependent). Other applications have not been tested.

Usage Guidelines

Short Term Storage: +4°C

Long Term Storage: -20°C

Storage Guidelines: Avoid multiple freeze-thaw cycles



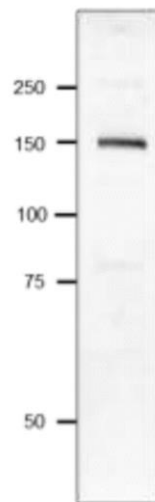
Antibody Datasheet

Name: Rabbit Anti-Pasteurella Multocida Toxin Antibody

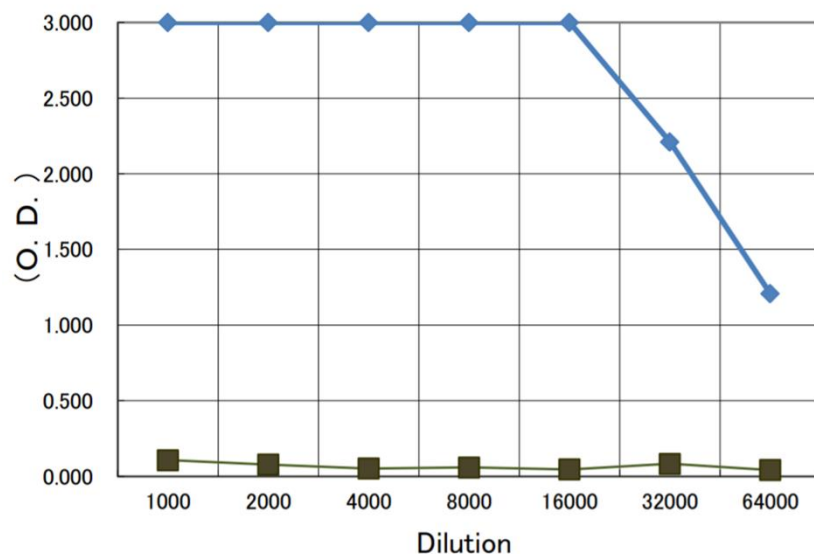
Product Code: PAB21483-200

Batch #:

Western Blot: Western blot of recombinant *P. multocida* toxin (7.4 ng). Anti-PMT antibody was used at 1/1,000 dilution. As secondary antibody, HRP conjugated goat anti-rabbit IgG (ab 97051) was used at 1/20,000 dilution.



Indirect ELISA: Plate was coated with 0.2 µg of recombinant *P. multocida* toxin per well. 100 µl of anti-*P. multocida* toxin serum at the indicated dilution was added to each well and incubated. After washing, goat anti-rabbit-IgG conjugated with HRP was added as a secondary antibody. Colour was developed with TMB as substrate. Black boxes are data with pre-immune serum.



X

QC

X

QA

Products are for Research Use or for Further Manufacturing Use only. Not for Diagnostic or Therapeutic Use.

