

Antibody Datasheet

Name: Rabbit Anti-Pertussis Toxin Antibody

Product Code: PAB21485-100

Batch #:

Date of Manufacture:

Product Description: Anti-Pertussis toxin antibody, rabbit antiserum.

Isotype: IgG

Amount: 0.1 ml

Presentation: Whole rabbit antiserum with 0.09% sodium azide.

Preservative: 0.09 % sodium azide

Immunogen: Immunization was Initiated with toxoid and boosted with native toxin.

Specificity: Pertussis toxin (PT)

Applications: Western blotting (1/2,000~1/10,000 dilution), ELISA (1/10,000~1/20,000 dilution), Dot blotting (1/2,000~1/10,000 dilution), Immunoprecipitation (1/200~1/500 dilution), Neutralizing (Assay dependent). Other applications have not been tested.

Usage Guidelines

Short Term Storage: +4°C

Long Term Storage: -20°C

Storage Guidelines: Avoid multiple freeze-thaw cycles



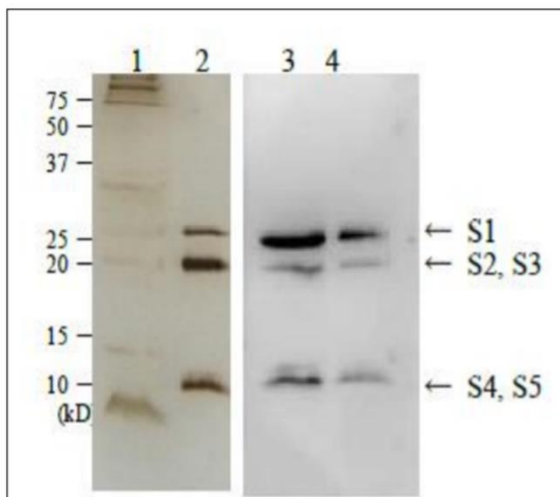
Antibody Datasheet

Name: Rabbit Anti-Pertussis Toxin Antibody

Product Code: PAB21485-100

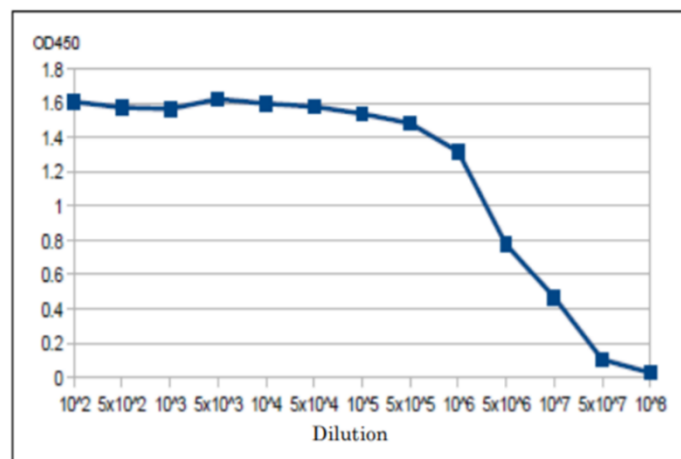
Batch #:

Western Blot: Detection of pertussis toxin in culture medium of *Bordetella pertussis* strain Tohama by Western blotting using anti-pertussis toxin antibody. The toxin consists of five subunits as indicated by S1 to S5.

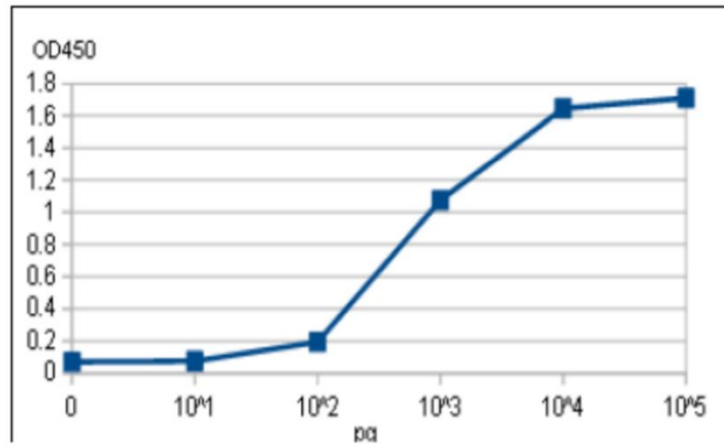


- 1: Culture medium of *Bordetella pertussis*. SDS-PAGE, silver-stained.
- 2: Purified pertussis toxin (200 ng). SDS-PAGE, silver-stained.
- 3: Western blot of culture medium of *Bordetella pertussis* as in 1.
- 4: Western blot of purified pertussis toxin (10 ng).

ELISA: Titration of antibody reactivity of anti-Pertussis antiserum by direct ELISA. Plate was coated with 100µg of pertussis toxin per well and 100µl of the antiserum at the indicated dilution was added to each well and incubated. After washing, goat anti-rabbit-IgG conjugated with HRP was added as secondary antibody. Colour was developed with TMB as substrate.



ELISA: Titration of pertussis toxin by direct ELISA using anti-pertussis toxin antiserum. ELISA plate is coated with indicated amounts of pertussis toxin per well. Antiserum was used at 1/12,500 dilution. ELISA was performed as above. Dynamic range was 100 pg to 10 ng under these conditions.



X

QC

X

QA

Products are for Research Use or for Further Manufacturing Use only. Not for Diagnostic or Therapeutic Use.

