

## Certificate of Analysis

**Name:** Borrelia burgdorferi OspC Protein, His-Tag (E. coli)

**Product Code:** REC32019-100 / REC32019-500

**Batch #:**

**Date of Manufacture:**

**Product Description:** Recombinant Borrelia (Borrelia) burgdorferi outer surface protein C (OspC).

**Expression System:** E. coli

**Accession:** WP\_010890595.1

**Amino Acids:** 20-210

**Tag:** His-tag, N-terminus

**Expected Molecular Weight:** 22 kDa

**Observed Molecular Weight:** 27 kDa

**Amount:** 0.1 mg / 0.5 mg

**Concentration:** mg/ml

**Presentation:** Liquid

**Buffer:** DPBS

### Usage Guidelines

**Short Term Storage:** -80°C

**Long Term Storage:** -80°C

**Stability:** Not determined

**Freezing:** Can be frozen, but avoid multiple freeze-thaw cycles.

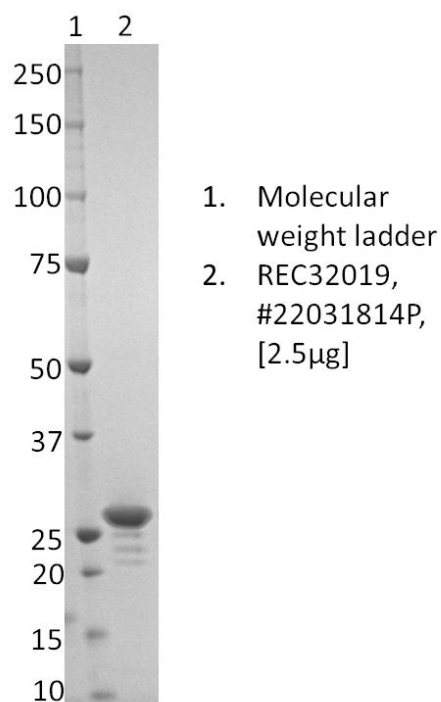
## Certificate of Analysis

**Name:** Borrelia burgdorferi OspC Protein, His-Tag (E. coli)

**Product Code:** REC32019-100 / REC32019-500

**Batch #:**

**SDS-PAGE:** Coomassie-stained reducing SDS-PAGE showing purified OspC protein.



X

---

QC

X

---

QA

**Products are for Research Use or for Further Manufacturing Use only. Not for Diagnostic or Therapeutic Use.**

