

Certificate of Analysis

Name: mouse anti-Rubella virus IgG (clone DD5)

Product Code: MAB12516 -100/500

Batch #: 23050338

Date of Manufacture: 03-MAY-2023

Product Description: mouse IgG antibody generated by immunization with recombinant Rubella virus-like particles (The Native Antigen Company REC31651). The antibody binds to both recombinant Rubella E1 and virus-like particles in ELISA and Western blot formats.

Clone Number: M-NAC-25-DD5.H5.E5.A9.B9

Isotype: IgG

Amount: 0.1 mg / 0.5 mg

Concentration: 0.8 mg/ml (determined by A₂₈₀)

Purity: 90%

Presentation: Liquid

Buffer: PBS

Immunogen: Rubella virus-like particles protein (The Native Antigen Company REC31651)

Applications: ELISA, Western blot

Usage Guidelines

Short Term Storage: +4°C

Long Term Storage: -20°C

Storage Guidelines: Avoid multiple freeze-thaw cycles.



Antibody Datasheet

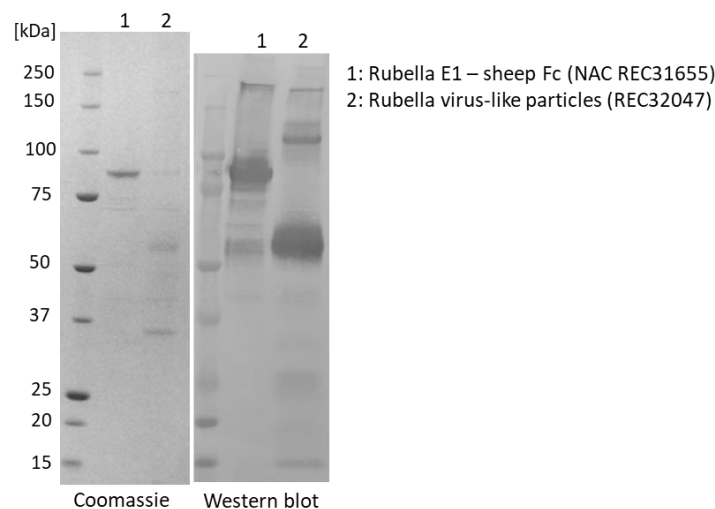
Name: M-NAC-25 (DD5) mouse anti-Rubella virus IgG

Batch #: 23050338

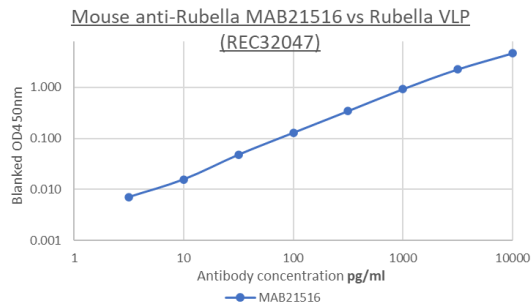
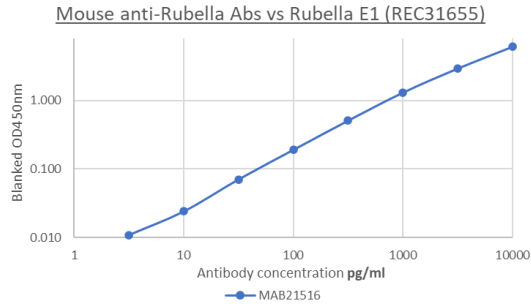
Date of Manufacture: 03-MAY-2023

Activity assays:

- (1) Western blot: 100ng of each Rubella E1 or Rubella virus-like particles antigen were separated by SDS-PAGE, then blotted onto nitrocellulose and probed with MAB12516 as primary antibody at 1 ug/ml and an anti-mouse IgG-HRP secondary antibody. The antibody recognizes Rubella E1, both in single recombinant form and as part of virus-like particles.



- (2) ELISA: Indirect antigen-down ELISA was performed with 1ug/ml of antigen coating (Rubella E1 in top figure, Rubella virus-like particles in the bottom figure). MAB12516 was used in various concentrations (shown in pg/ml) as primary antibody for 1h at room temperature, then detected with anti-mouse IgG-HRP as secondary antibody. Background subtracted raw data is shown in the figures below.



10/05/2023

X 

QC
 Signed by: Holger Hannemann

13/07/2023

X 

QA
 Signed by: Louise Rose

Products are for Research Use or for Further Manufacturing Use only. Not for Diagnostic or Therapeutic Use.

