

Certificate of Analysis

Name: Human immunodeficiency virus subtype CRF01_AE, gp140 (SOSIP), untagged

Product Code: REC32085-100 /REC32085-500

Batch #: 23112812P

Date of Manufacture: 28 NOV 2023

Product Description: Human immunodeficiency virus subtype CRF01_AE glycoprotein 140 (gp140).

This protein is the soluble part of the human immunodeficiency virus Envelope protein gp160. In mammalian cells the protein is cleaved by a furin-like protease into gp120 and the soluble portion of gp41. The protein has been engineered so that both of these proteins are linked via a disulfide bridge. The furin cleavage site was enhanced to "RRRRRR" to facilitate maximum cleavage. An estimated 25% of the protein is cleaved into gp120 and the soluble gp41 fraction, 75% are presented as gp140. Oligomeric status is mainly monomeric, with a minority of dimer and trimer. The protein was produced in HEK293 cells and purified from culture supernatant by lectin affinity chromatography.

Expression System: HEK293

Accession: AFJ93254.1

Strain/Isolate: CM240

Amino Acids: 36-658

Tag: none

Expected Molecular Weight: 70 kDa

Observed Molecular Weight: 100 kDa

Amount: 0.1 mg / 0.5 mg

Concentration: 0.74 mg/ml

Purity: 76%

Presentation: Liquid

Buffer: DPBS



Usage Guidelines

Short Term Storage: -80°C

Long Term Storage: -80°C

Stability: Not determined

Freezing: Can be frozen, but avoid multiple freeze-thaw cycles

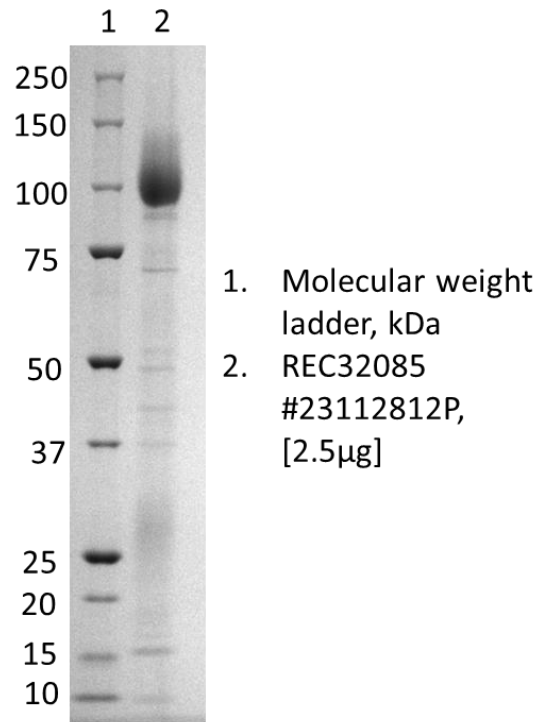
Certificate of Analysis

Name: Human immunodeficiency virus subtype CRF01_AE, gp140 (SOSIP), untagged

Product Code: REC32085-100 /REC32085-500

Batch #: 23112812P

SDS-PAGE: Representative Coomassie-stained reducing SDS-PAGE showing purified Human immunodeficiency virus subtype CRF01_AE, gp140 (SOSIP), untagged.



04/12/2023

X *H. Schuhmann*

QC

Signed by: Holger Schuhmann

04/12/2023

X *Rose*

QA

Signed by: Louise Rose

Products are for Research Use or for Further Manufacturing Use only. Not for Diagnostic or Therapeutic Use.



www.thenativeantigencompany.com
VAT No: 102038475

NAC.Contact@LGCGroup.com
Registration No. 7386339

Page 3 of 3

The Native Antigen Company is now part of LGC Group.

Science for a Safer World