

Certificate of Analysis

Name: Human immunodeficiency virus subtype B, gp140 (SOSIP), untagged

Product Code: REC32086-100 / REC32086-500

Batch #: 23112909P

Date of Manufacture: 29 Nov 2023

Product Description: Human immunodeficiency virus subtype B glycoprotein 140 (gp140). This protein is the soluble part of the human immunodeficiency virus Envelope protein gp160. In mammalian cells the protein is cleaved by a furin-like protease into gp120 and the soluble portion of gp41. The protein has been engineered so that both of these proteins are linked via a disulfide bridge. The furin cleavage site was enhanced to "RRRRRR" to facilitate maximum cleavage. An estimated 25% of the protein is cleaved into gp120 and the soluble gp41 fraction, 75% are presented as gp140.

Oligomeric status is mainly monomeric, with a minority of dimer and trimer. The protein was produced in HEK293 cells and purified from culture supernatant by lectin affinity chromatography.

Expression System: HEK293

Accession: AAW72245.1

Strain/Isolate: 89BZ_167

Amino Acids: 31-664

Tag: none

Expected Molecular Weight: 75 kDa

Observed Molecular Weight: 120 kDa

Amount: 0.1 mg / 0.5 mg

Concentration: 0.39 mg/ml

Purity: 67%

Presentation: Liquid

Buffer: DPBS



Usage Guidelines

Short Term Storage: -80°C

Long Term Storage: -80°C

Stability: Not determined

Freezing: Can be frozen, but avoid multiple freeze-thaw cycles

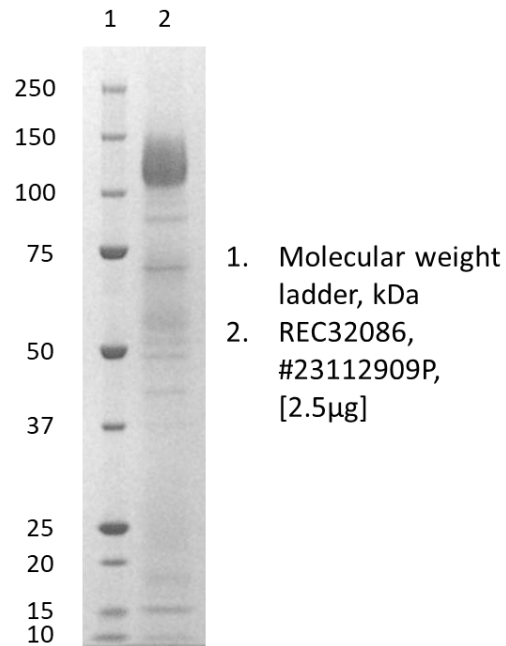
Certificate of Analysis

Name: Human immunodeficiency virus subtype B, gp140 (SOSIP), untagged

Product Code: REC32086-100 / REC32086-500

Batch #: 23112909P

SDS-PAGE: Representative Coomassie-stained reducing SDS-PAGE showing purified Human immunodeficiency virus subtype B, gp140 (SOSIP), untagged.



05/12/2023

X *H. Schuhmann*

QC

Signed by: Holger Schuhmann

06/12/2023

X *L. Rose*

QA

Signed by: Louise Rose

Products are for Research Use or for Further Manufacturing Use only. Not for Diagnostic or Therapeutic Use.

