

## Certificate of Analysis

**Name:** Mouse anti-CCHFV gp38 (clone GC11) antibody (IgG)

**Product Code:** MAB12522-100 / -500

**Batch #:** 23071717

**Date of Manufacture:** 19-JUL-2023

**Product Description:** Mouse anti-Crimean-Congo hemorrhagic fever virus (CCHFV) glycoprotein gp38 antibody (clone GC11), isotype IgG1k, purified by Protein A chromatography to a purity of >85%.

**Clone Number:** GC11.B9.D8.F6

**Amount:** 0.1 / 0.5 mg

**Concentration:** 0.90 mg/ml

**Presentation:** Liquid

**Buffer:** PBS, pH 7.4, sterile filtered

**Immunogen:** CCHFV gp38 (The Native Antigen Company REC32029)

**Applications:** ELISA, WB

**Application Notes:** Recommended for use in WB (1 ug/ml), ELISA (>100 ng/ml). Final working dilutions must be determined by end user.

### Usage Guidelines

**Short Term Storage:** +4°C

**Long Term Storage:** -20°C

**Storage Guidelines:** Avoid multiple freeze-thaw cycles



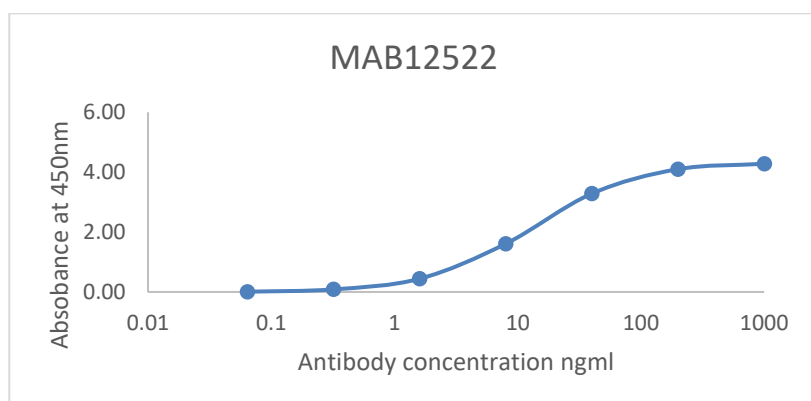
## Antibody Datasheet

**Name:** Mouse anti-CCHFV gp38 (clone GC11) antibody (IgG)

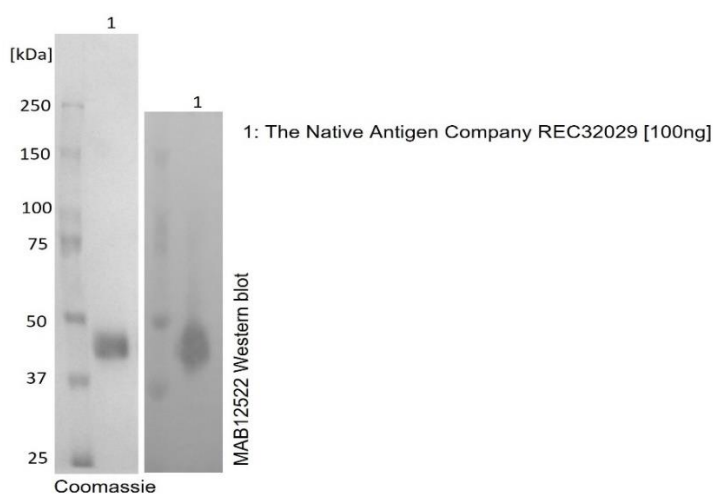
**Product Code:** MAB12522-100 / -500

**Batch #:** 23071717

Antigen down ELISA: Plate coated with 1ug/ml of CCHFV gp38 protein (The Native Antigen Company REC32029) in DPBS over night, blocked with 1% BSA in DPBS, probed with various antibody concentration. Bound antibody was detected using an anti-mouse IgG-HRP conjugate.



### Reducing SDS-PAGE / Western blot



## Certificate of Analysis

**Name:** Mouse anti-CCHFV gp38 (clone GC11) antibody (IgG)

**Product Code:** MAB12522-100 / -500

**Batch #:** 23071717

24/07/2023

X 

---

QC  
Signed by: Holger Hannemann

24/07/2023

X 

---

QA  
Signed by: Louise Rose

**Products are for Research Use or for Further Manufacturing Use only. Not for Diagnostic or Therapeutic Use.**