

Certificate of Analysis

Name: Mouse anti-CCHFV Gc (clone EB1) antibody (IgG)

Product Code: MAB12525-100 / -500

Batch #: 23071720

Date of Manufacture: 19-JUL-2023

Product Description: Mouse anti-Crimean-Congo hemorrhagic fever virus (CCHFV) major glycoprotein Gc antibody (clone EB1), isotype IgG1k, purified by Protein A chromatography to a purity of >85%.

Clone Number: EB1.F7.A10.A7.D9

Amount: 0.1 / 0.5 mg

Concentration: 0.43 mg/ml

Presentation: Liquid

Buffer: PBS, pH 7.4, sterile filtered

Immunogen: CCHFV Gc (The Native Antigen Company REC31730)

Applications: ELISA. Not recommended for use in Western blot.

Application Notes: ELISA (> 100 ng/ml). Final working dilutions must be determined by end user.

Usage Guidelines

Short Term Storage: +4°C

Long Term Storage: -20°C

Storage Guidelines: Avoid multiple freeze-thaw cycles



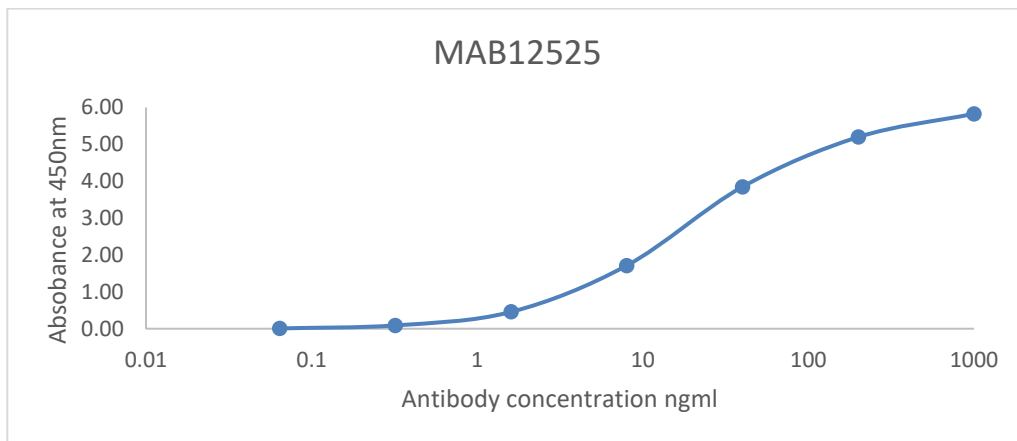
Antibody Datasheet / Certificate of Analysis

Name: Mouse anti-CCHFV Gc (clone EB1) antibody (IgG)

Product Code: MAB12525-100 / -500

Batch #: 23071720

Antigen down ELISA: Plate coated with 1ug/ml of CCHFV Gc protein (The Native Antigen Company REC31730) in DPBS over night, blocked with 1% BSA in DPBS, probed with various antibody concentration. Bound antibody was detected using an anti-mouse IgG-HRP conjugate.



06/09/2023

X

QC

Signed by: Holger Hannemann

19/09/2023

X

QA

Signed by: Louise Rose

Products are for Research Use or for Further Manufacturing Use only. Not for Diagnostic or Therapeutic Use.

