

## Certificate of Analysis

**Name:** Mouse anti-CCHFV gp38 (clone BG11) antibody (IgG)

**Product Code:** MAB12528-100 / 500

**Batch #:** 23102414

**Date of Manufacture:** 25-OCT-2023

**Product Description:** Mouse anti-Crimean-Congo hemorrhagic fever virus (CCHFV) glycoprotein gp38 antibody (clone BG11), isotype IgG1k, purified by Protein G chromatography to a purity of >85%.

**Clone Number:** BG11.A10.F7.C8.B8.D7

**Amount:** 0.1 / 0.5 mg

**Concentration:** 0.76 mg/ml

**Presentation:** Liquid

**Buffer:** PBS, pH 7.4, sterile filtered

**Immunogen:** CCHFV gp38 (The Native Antigen Company REC32029)

**Applications:** ELISA, WB

**Application Notes:** Recommended for use in WB (1µg/ml), ELISA (>100ng/ml). Final working dilutions must be determined by end user.

### Usage Guidelines

**Short Term Storage:** +4°C

**Long Term Storage:** -20°C

**Storage Guidelines:** Avoid multiple freeze-thaw cycles.



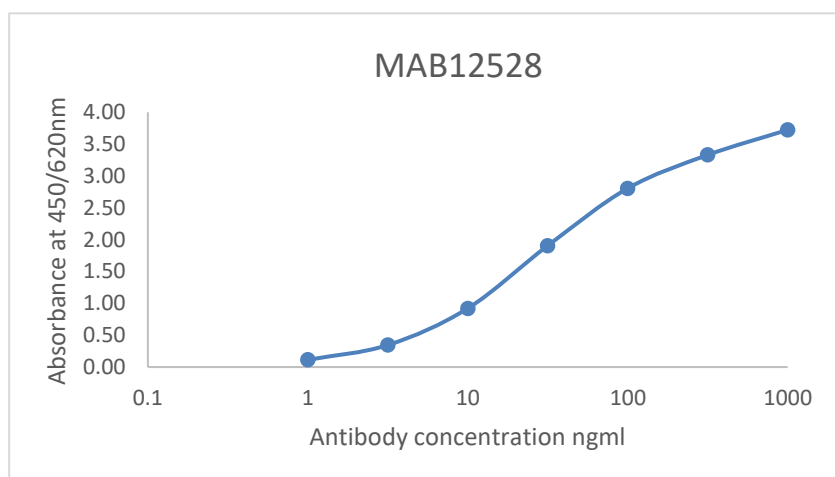
## Antibody Datasheet

**Name:** Mouse anti-CCHFV gp38 (clone BG11) antibody (IgG)

**Product Code:** MAB12528-100 / 500

**Batch #:** 23102414

Antigen down ELISA: Plate coated with 1ug/ml of CCHFV gp38 protein (The Native Antigen Company REC32029) in DPBS overnight, blocked with 1% BSA in DPBS, probed with various antibody concentration. Bound antibody was detected using an anti-mouse IgG-HRP conjugate.



### Reducing SDS-PAGE / Western blot



## Certificate of Analysis

**Name:** Mouse anti-CCHFV gp38 (clone BG11) antibody (IgG)

**Product Code:** MAB12528-100 / 500

**Batch #:** 23102414

10/25/2023

X 

---

QC  
Signed by: Carol Fernandes

08/11/2023

X 

---

QA  
Signed by: Louise Rose

**Products are for Research Use or for Further Manufacturing Use only. Not for Diagnostic or Therapeutic Use.**

