

Certificate of Analysis

Name: Mouse anti-CCHFV gp38 (clone HH7) antibody (IgG)

Product Code: MAB12530-100 / 500

Batch #: 23102416

Date of Manufacture: 25-OCT-2023

Product Description: Mouse anti-Crimean-Congo hemorrhagic fever virus (CCHFV) glycoprotein gp38 antibody (clone HH7), isotype IgG1k, purified by Protein G chromatography to a purity of >85%.

Clone Number: HH7.H6.B9.E4.B9

Amount: 0.1 / 0.5 mg

Concentration: 0.62 mg/ml

Presentation: Liquid

Buffer: PBS, pH 7.4, sterile filtered

Immunogen: CCHFV gp38 (The Native Antigen Company REC32029)

Applications: ELISA, WB

Application Notes: Recommended for use in WB (1µg/ml), ELISA (>100ng/ml). Final working dilutions must be determined by end user.

Usage Guidelines

Short Term Storage: +4°C

Long Term Storage: -20°C

Storage Guidelines: Avoid multiple freeze-thaw cycles.



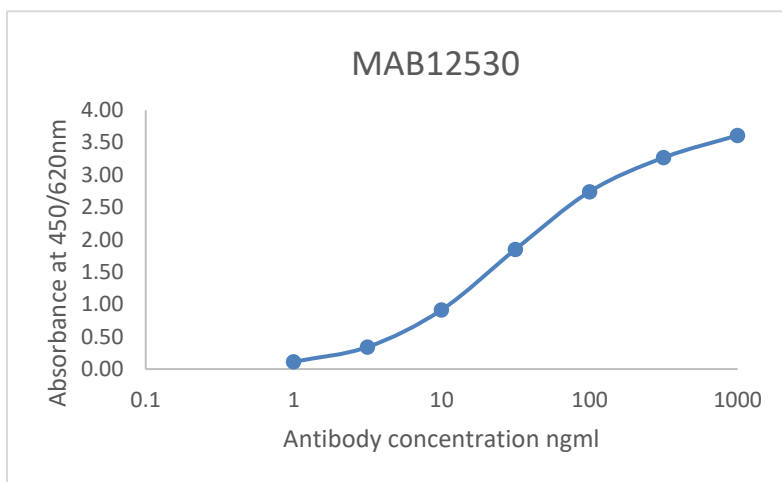
Antibody Datasheet

Name: Mouse anti-CCHFV gp38 (clone HH7) antibody (IgG)

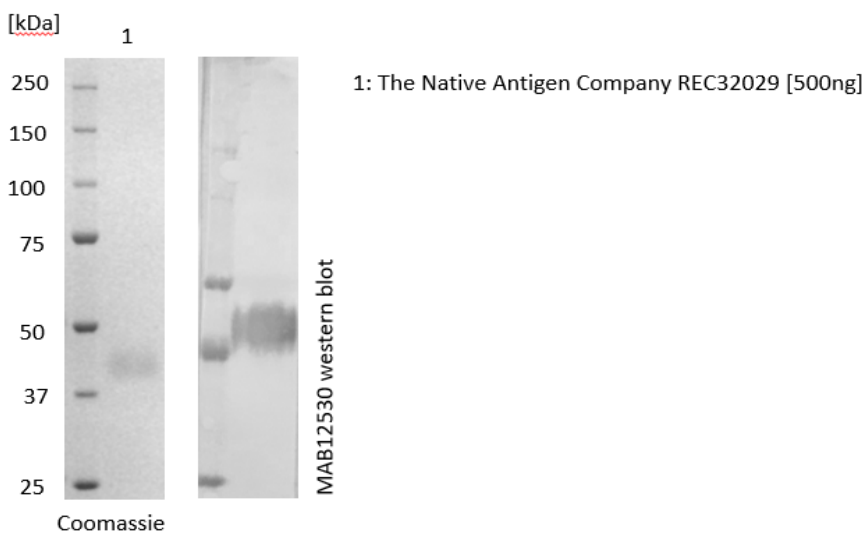
Product Code: MAB12530-100 / 500

Batch #: 23102416

Antigen down ELISA: Plate coated with 1ug/ml of CCHFV gp38 protein (The Native Antigen Company REC32029) in DPBS overnight, blocked with 1% BSA in DPBS, probed with various antibody concentration. Bound antibody was detected using an anti-mouse IgG-HRP conjugate.



Reducing SDS-PAGE / Western blot



Certificate of Analysis

Name: Mouse anti-CCHFV gp38 (clone HH7) antibody (IgG)

Product Code: MAB12530-100 / 500

Batch #: 23102416

11/8/2023

X 

QC

Signed by: Carol Fernandes

09/11/2023

X 

QA

Signed by: Louise Rose

Products are for Research Use or for Further Manufacturing Use only. Not for Diagnostic or Therapeutic Use.

