

Certificate of Analysis

Name: human cytomegalovirus (HCMV) AD169 PP65 C-terminal His-tag, 2x Strep-tag

Product Code: REC32117-100 / REC32117-500

Batch #: 24091717P

Date of Manufacture: 17 Sep 2024

Product Description: human cytomegalovirus (HCMV)AD169 PP65 C-terminal His-tag, 2x Strep-tag.

Expression System: HEK293

Accession: B8YEA8

Strain/Isolate: AD169

Amino Acids: 1-561

Tag: 6xHis-, 2xStrep-tag, C-Terminus

Expected Molecular Weight: 67.3 kDa

Observed Molecular Weight: 70 kDa

Amount: 0.1 mg / 0.5 mg

Concentration: 0.68 mg/mL

Presentation: Liquid

Buffer: 50mM HEPES, 500mM NaCl, 20% (v/v) glycerol, 0.1% CHAPS, pH 8.0

Usage Guidelines

Short Term Storage: -80°C

Long Term Storage: -80°C

General Storage Conditions: Avoid multiple freeze-thaw cycles

Stability: n/d

Freezing: Can be frozen, but avoid multiple freeze-thaw cycles



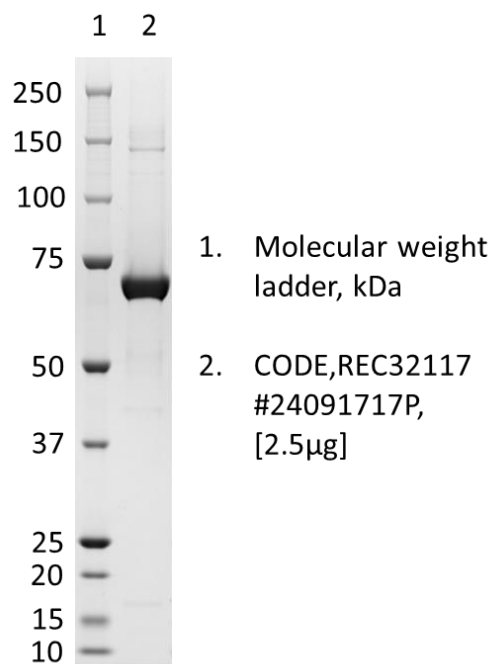
Certificate of Analysis

Name: human cytomegalovirus (HCMV) AD169 PP65 C-terminal His-tag, 2x Strep-tag

Product Code: REC32117-100 / REC32117-500

Batch #: 24091717P

SDS-PAGE: Representative Coomassie-stained reducing SDS-PAGE showing purified human cytomegalovirus (HCMV) AD169 PP65 C-terminal His-tag, 2x Strep-tag.



10/10/2024

X *H. Schuhmann*

QC

Signed by: Holger.Schuhmann@lgcgroup.com

10/10/2024

X *L. Hennebry*

QA

Signed by: Linda.Hennebry@lgcgroup.com

Products are for Research Use or for Further Manufacturing Use only. Not for Diagnostic or Therapeutic Use.

