

## Certificate of Analysis

**Name:** Human prolactin hormone

**Product Code:** REC32128-100 / REC32128-500

**Batch #:** 25030716P

**Date of Manufacture:** 07 Mar 2025

**Product Description:** Human prolactin hormone, produced in HEK293 cells with a C-terminal His<sub>6</sub>-tag / 2x Strep-tag and purified by affinity chromatography and dialysis.

**Expression System:** HEK293

**Amino Acids:** 1-227

**Tag:** His<sub>6</sub>-tag / 2xStrep-tag, C-Terminus

**Expected Molecular Weight:** 30.4 kDa

**Observed Molecular Weight:** 30 kDa, 32 kDa

**Amount:** 0.1 mg, 0.5 mg

**Concentration:** 2.0 mg/mL

**Presentation:** Liquid

**Buffer:** DPBS

### Usage Guidelines

**Short Term Storage:** -80°C

**Long Term Storage:** -80°C

**General Storage Conditions:** Avoid multiple freeze-thaw cycles

**Stability:** n/d

**Freezing:** Can be frozen, but avoid multiple freeze-thaw cycles

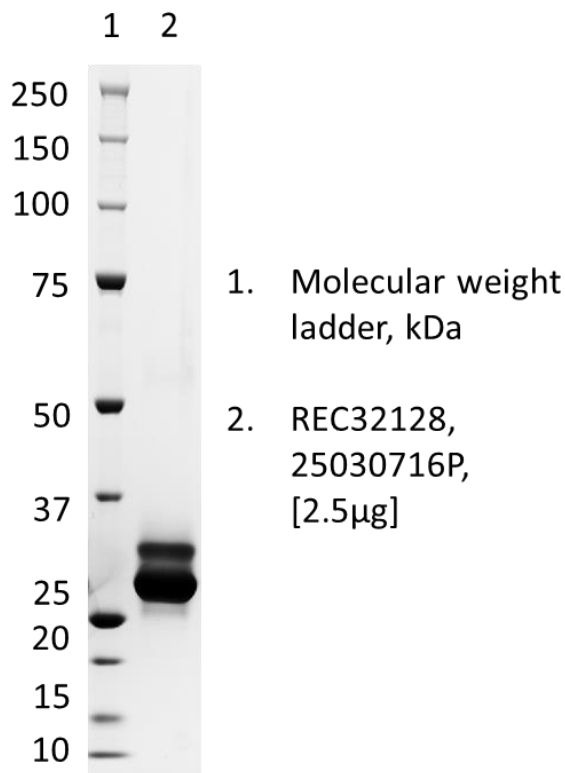
## Certificate of Analysis

**Name:** Human prolactin hormone

**Product Code:** REC32128-100 / REC32128-500

**Batch #:** 25030716P

**SDS-PAGE:** Representative Coomassie-stained reducing SDS-PAGE showing purified Human prolactin hormone.



17/03/2025

X *H. Schuhmann*

QC

Signed by: Holger.Schuhmann@lgcgroup.com

18/03/2025

X *E. Tressens*

QA

Signed by: Estelle.Tressens@LGCGroup.com

**Products are for Research Use or for Further Manufacturing Use only. Not for Diagnostic or Therapeutic Use.**



