

## Certificate of Analysis

**Name:** Human Thyrotropin hormone

**Product Code:** REC32129-100 / REC32129-500

**Batch #:** 25031910P

**Date of Manufacture:** 19 MAR 2025

**Product Description:** Human Thyrotropin hormone, produced in HEK293 cell and purified by affinity chromatography and dialysis.

**Expression System:** HEK293

**Accession:** P01215 / P01222

**Tag:** His<sub>6</sub>- tag / 2x Strep-tag, C-Terminus

**Expected Molecular Weight:** 17.6 / 15.6 kDa

**Observed Molecular Weight:** 28 /18 kDa

**Amount:** 0.1 mg / 0.5 mg

**Concentration:** 0.18 mg/ml

**Presentation:** Liquid

**Buffer:** DPBS

### Usage Guidelines

**Short Term Storage:** -80°C

**Long Term Storage:** -80°C

**General Storage Conditions:** Avoid multiple freeze-thaw cycles

**Stability:** n/d

**Freezing:** Can be frozen, but avoid multiple freeze-thaw cycles

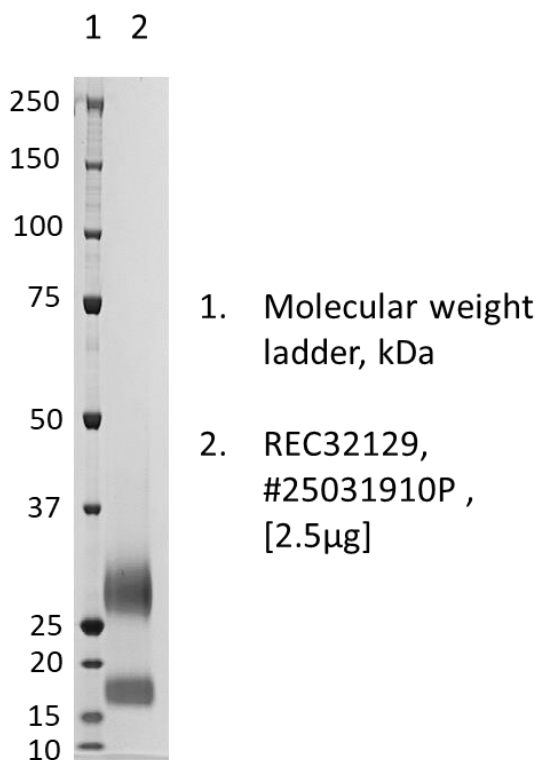
## Certificate of Analysis

**Name:** Human Thyrotropin hormone

**Product Code:** REC32129-100 / REC32129-500

**Batch #:** 25031910P

**SDS-PAGE:** Representative Coomassie-stained reducing SDS-PAGE showing purified Human Thyrotropin hormone.



27/03/2025

X *H. Schuhmann*

QC

Signed by: Holger.Schuhmann@lgcgroup.com

28/03/2025

X *E. Tressens*

QA

Signed by: Estelle.Tressens@LGCGroup.com

**Products are for Research Use or for Further Manufacturing Use only. Not for Diagnostic or Therapeutic Use.**



[www.thenativeantigencompany.com](http://www.thenativeantigencompany.com)

[NAC.Contact@LGCGroup.com](mailto:NAC.Contact@LGCGroup.com)

Registration No. 7386339

Page 2 of 2

The Native Antigen Company is now part of LGC Group.

*Science for a Safer World*