

## Certificate of Analysis

**Name:** Human chorionic gonadotropin hormone, subunit alpha+Beta

**Product Code:** REC32131-10 / REC32131-50 / REC32131-100 / REC32131-500

**Batch #:** 25032815P

**Date of Manufacture:** 28 Mar 2025

**Product Description:** Human chorionic gonadotropin hormone, subunits alpha and Beta, produced in HEK293 cells and purified by affinity chromatography and dialysis.

**Expression System:** HEK293

**Accession:** P01215, P0DN87

**Tag:** 6xHis-tag, 2xStrep-tag, C-Terminus

**Expected Molecular Weight:** 17.7 kDa; 17.6 kDa

**Observed Molecular Weight:** 27 kDa; 35 kDa

**Amount:** 0.01 mg / 0.05 mg / 0.1 mg / 0.5 mg

**Concentration:** 0.34 mg/ml

**Presentation:** Liquid

**Buffer:** DPBS

### Usage Guidelines

**Short Term Storage:** -80°C

**Long Term Storage:** -80°C

**General Storage Conditions:** Avoid multiple freeze-thaw cycles

**Stability:** n/d

**Freezing:** Can be frozen, but avoid multiple freeze-thaw cycles

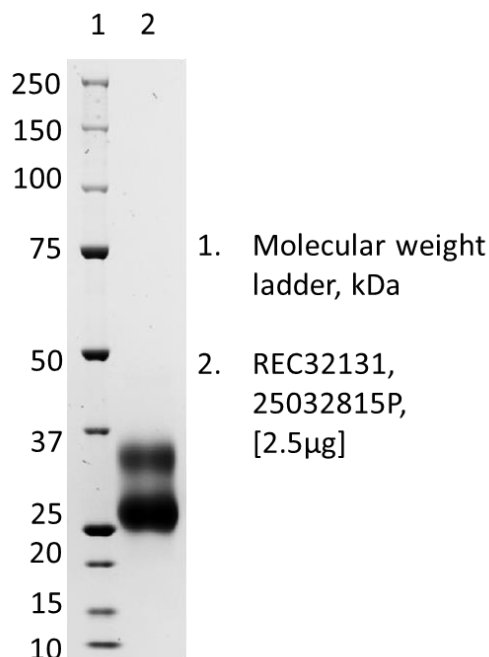
## Certificate of Analysis

**Name:** Human chorionic gonadotropin hormone, subunit alpha+Beta

**Product Code:** REC32131-10 / REC32131-50 / REC32131-100 / REC32131-500

**Batch #:** 25032815P

**SDS-PAGE:** Representative Coomassie-stained reducing SDS-PAGE showing purified Human chorionic gonadotropin hormone, subunit alpha+Beta.



30/04/2025

X *H. Schuhmann*

QC

Signed by: Holger.Schuhmann@lgcgroup.com

01/05/2025

X *Estelle.Tressens*

QA

Signed by: Estelle.Tressens@LGCGroup.com

**Products are for Research Use or for Further Manufacturing Use only. Not for Diagnostic or Therapeutic Use.**



[www.thenativeantigencompany.com](http://www.thenativeantigencompany.com)

[NAC.Contact@LGCGroup.com](mailto:NAC.Contact@LGCGroup.com)

Registration No. 7386339

Page 2 of 2

The Native Antigen Company is now part of LGC Group.

*Science for a Safer World*