

Certificate of Analysis

Name: Human follicle-stimulating hormone, subunit Alpha+Beta

Product Code: REC32134-10 / REC32134-50 / REC32134-100 / REC32134-500

Batch #: 25041716P

Date of Manufacture: 17-APR-2025

Product Description: Human follicle-stimulating hormone, subunit Alpha+Beta, produced in HEK293 cells and purified by affinity chromatography and dialysis.

Expression System: HEK293

Accession: P01215, P01225

Tag: His₆-Tag, 2x Strep-Tag, C-Terminus

Expected Molecular Weight: 13.1, 14.7 kDa

Observed Molecular Weight: 22, 30 kDa

Amount: 0.01 mg / 0.05 mg / 0.1 mg / 0.5 mg

Concentration: 0.35 mg/ml

Presentation: Liquid

Buffer: DPBS

Usage Guidelines

Short Term Storage: -80°C

Long Term Storage: -80°C

General Storage Conditions: Avoid multiple freeze-thaw cycles

Stability: n/d

Freezing: Can be frozen, but avoid multiple freeze-thaw cycles

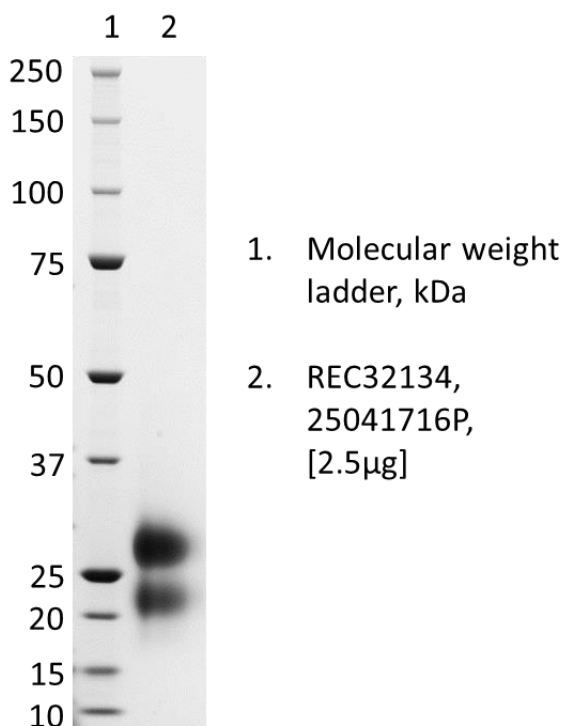
Certificate of Analysis

Name: Human follicle-stimulating hormone, subunit Alpha+Beta

Product Code: REC32134-10 / REC32134-50 / REC32134-100 / REC32134-500

Batch #: 25041716P

SDS-PAGE: Representative Coomassie-stained reducing SDS-PAGE showing purified Human follicle-stimulating hormone, subunit Alpha+Beta.



08/05/2025

X *H. Schuhmann*

QC

Signed by: Holger.Schuhmann@lgcgroup.com

08/05/2025

X *E. Tressens*

QA

Signed by: Estelle.Tressens@LGCGroup.com

Products are for Research Use only or for Further Manufacturing Use only. Not for Diagnostic or Therapeutic Use.



www.thenativeantigencompany.com

NAC.Contact@LGCGroup.com

Registration No. 7386339

Page 2 of 2

The Native Antigen Company is now part of LGC Group.

Science for a Safer World