

## Certificate of Analysis

**Name:** Clostridium difficile ribotype R087 Toxoid B

**Product Code:** NAT41676-50 / NAT41676-100 / NAT41676-500

**Batch #:** 47040813

**Date of Manufacture:** 14<sup>th</sup> August 2025

**Product Description:** Native toxin purified from *Clostridioides difficile* (syn. *Clostridium difficile*) ribotype R087, converted to toxoid through processing with formaldehyde.

**Strain/Isolate:** ribotype R087

**Amount:** 0.05 mg / 0.10 mg / 0.50 mg

**Presentation:** Lyophilised. May appear bubbly/glassy due to product stabilisation in sucrose.

**Buffer:** 50 mM HEPES pH8.0, 150 mM NaCl, 10% (w/v) sucrose.

**Reconstitution:**

NAT41676-50	100ul sterile pure water	final concentration 500ug/ml
NAT41676-100	200ul sterile pure water	final concentration 500ug/ml
NAT41676-500	1000ul sterile pure water	final concentration 500ug/ml

**Verocytotoxicity assay result:** 4pg/ml (lowest point at which rounded cells are observed)

### Usage Guidelines

**Short Term Storage:** 2°C to 8°C lyophilised

**Long Term Storage:** -80° C after reconstitution

**Stability:** Lyophilised vial 1 year after date of receipt.  
Reconstituted liquid 1 month at 2°C to 8°C, up to 12 months at -80°C.

**Freezing:** Avoid multiple freeze-thaw cycles and temperature fluctuations of reconstituted product.  
Freezing and thawing may cause aggregation and reduce activity.

**Mixing:** Mix gently to avoid causing aggregation.

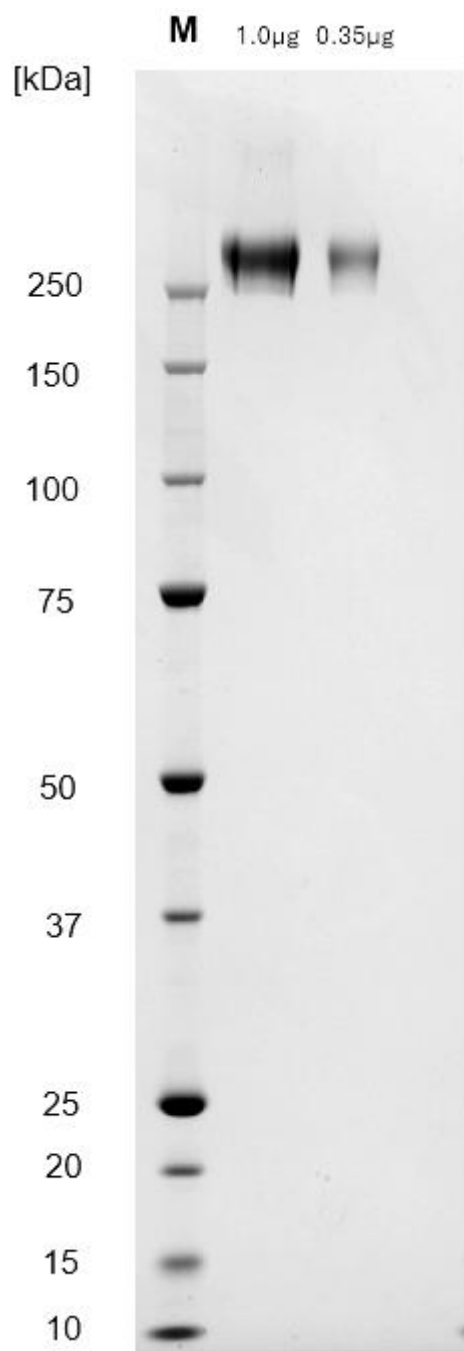
**Sterility:** This product has reduced bioburden through 0.2µm filtration, but is not sterile.

**Name:** Clostridium difficile ribotype R087 Toxoid B

**Product Code:** NAT41676-50 / NAT41676-100 / NAT41676-500

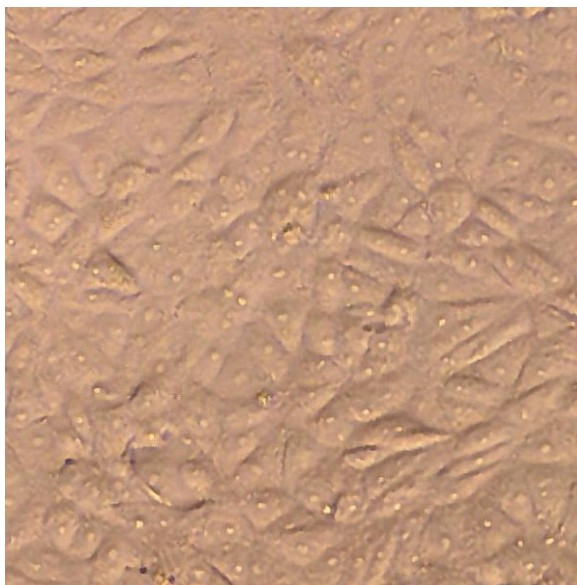
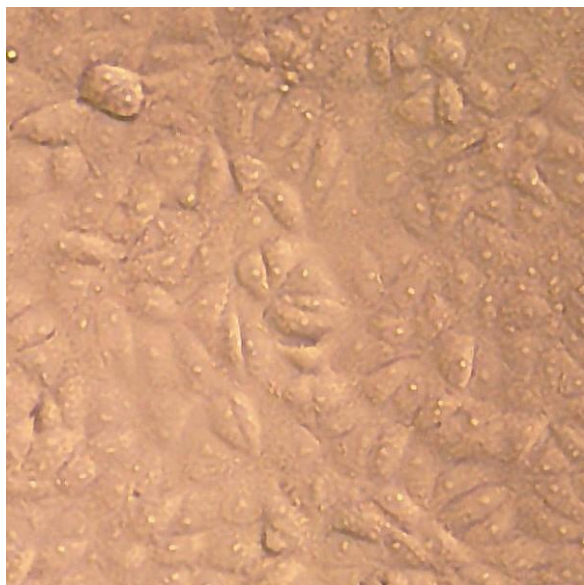
**Batch #:** 47040813

**SDS-PAGE:** Coomassie-stained reducing SDS-PAGE showing purified Clostridium difficile Toxoid B.



### Verocytotoxicity results

The Toxoid was negative by Verotoxicity up to 7.81µg/ml.



Negative control

Toxoid 7.81µg/ml

02/12/2025

X



QC

Signed by: Toni.Ertl@lgcgroup.com

02/12/2025

X



QA

Signed by: Estelle.Tressens@LGCGroup.com

**Products are for Research Use or for Further Manufacturing Use only. Not for Diagnostic or Therapeutic Use.**